

OBDLink[®] Family Reference and Programming Manual (FRPM)

Table of Contents

| | | |
|--------|---------------------------------------|----|
| 1.0 | Overview | 4 |
| 2.0 | Objective of This Manual | 4 |
| 3.0 | OBDLink Product Family..... | 4 |
| 3.1 | OBDLink Devices | 4 |
| 3.2 | OBDLink ICs | 5 |
| 4.0 | Feature Highlights..... | 5 |
| 5.0 | Typical Applications | 5 |
| 6.0 | Communicating with the OBDLink | 6 |
| 7.0 | AT Commands | 7 |
| 7.1 | AT Command Summary | 7 |
| 7.2 | AT Command Descriptions..... | 10 |
| 7.3 | Programmable Parameters | 17 |
| 8.0 | ST Commands | 20 |
| 8.1 | ST Command Summary | 20 |
| 8.2 | General ST Commands..... | 24 |
| 8.3 | UART Specific ST Commands | 24 |
| 8.4 | Device ID ST Commands | 26 |
| 8.5 | Voltage ST Commands | 27 |
| 8.6 | OBD Protocol ST Commands..... | 27 |
| 8.7 | ISO Specific ST Commands..... | 29 |
| 8.8 | CAN Specific ST Commands | 31 |
| 8.9 | Monitoring ST Commands..... | 32 |
| 8.10 | Filtering ST Commands..... | 32 |
| 8.11 | PowerSave ST Commands | 34 |
| 8.12 | Bluetooth Specific ST Commands..... | 37 |
| 8.13 | General Purpose I/O ST Commands | 38 |
| 8.14 | Periodic Messaging ST Commands | 38 |
| 9.0 | Error Messages..... | 40 |
| 10.0 | OBD Requests | 41 |
| 11.0 | OBD Message Filtering..... | 42 |
| 11.1 | Non-CAN Protocols | 42 |
| 11.2 | CAN Protocols | 44 |
| 12.0 | ISO 15765 Message Reception..... | 45 |
| 13.0 | CAN Addressing Formats | 47 |
| 13.1 | Normal | 47 |
| 13.2 | Normal fixed..... | 47 |
| 13.3 | Extended..... | 47 |
| 13.4 | Mixed | 47 |
| 14.0 | SAE J1939 | 48 |
| 15.0 | PowerSave Functionality | 52 |
| 15.1 | Control Modes | 52 |
| 15.1.1 | Native PowerSave Mode | 52 |
| 15.1.2 | ELM327 Low Power Mode..... | 52 |
| 15.2 | Sleep Triggers | 52 |
| 15.2.1 | STSLEEP and ATLP Commands | 52 |
| 15.2.2 | UART Inactivity | 53 |
| 15.2.3 | External SLEEP Input | 53 |
| 15.2.4 | Voltage Level Sleep | 53 |
| 15.3 | Wakeup Triggers | 53 |
| 15.3.1 | UART Rx Pulse Wakeup..... | 54 |
| 15.3.2 | External SLEEP Input Wakeup..... | 54 |
| 15.3.3 | Voltage Level Wakeup | 54 |
| 15.3.4 | Voltage Change Wakeup..... | 54 |
| 15.4 | Voltage Trigger Considerations | 55 |
| 15.5 | External Power Control Output..... | 55 |
| 15.6 | Device Specific Details | 55 |

| | | |
|-------------|--|----|
| 15.6.1 | OBLink Hardware Rev 1.x..... | 55 |
| 15.6.2 | OBLink Hardware Rev 2.0 - 2.4 | 55 |
| 15.6.3 | OBLink Hardware Rev 2.5 and Above | 56 |
| 15.6.4 | OBLink S | 56 |
| 15.6.5 | OBLink SX Rev 1.x..... | 56 |
| 15.6.6 | OBLink SX Rev 2.x..... | 56 |
| 15.6.7 | OBLink SX Rev 3.x..... | 56 |
| 15.6.8 | OBLink MX Bluetooth, OBLink LX, and OBLink MX+ | 56 |
| 15.6.9 | OBLink MX Wi-Fi..... | 56 |
| 15.6.10 | microOBD 200 | 56 |
| 15.6.11 | STN1110, STN1170, STN2100, and STN2120..... | 57 |
| 15.7 | Sleep/Wakeup Trigger Summary | 57 |
| Appendix A: | Revision History | 58 |
| Appendix B: | Contact Information..... | 60 |

TO OUR VALUED CUSTOMERS

It is our intention to provide our valued customers with the best documentation possible to ensure successful use of your OBD Solutions products. To this end, we will continue to improve our publications to better suit your needs. Our publications will be refined and enhanced as new volumes and updates are introduced.

Most Current Data Sheet

To obtain the most up-to-date version of this OBLink® Family Reference and Programming Manual, please visit our web site at <http://www.obdsol.com>

You can determine the version by examining its literature number found on the bottom outside corner of any page. The last character of the literature number is the version number, (e.g., OBLinkFRPMA is version A of document OBLinkFRPM).

All rights reserved. © 2020 OBD Solutions LLC

Every effort is made to verify the accuracy of information provided in this document, but no representation or warranty can be given, and no liability assumed by OBD Solutions with respect to the accuracy and/or use of any products or information described in this document. OBD Solutions will not be responsible for any patent infringements arising from the use of these products or information and does not authorize or warrant the use of any OBD Solutions product in life support devices and/or systems. OBD Solutions reserves the right to make changes to the device(s) described in the document in order to improve reliability, function, or design.

OBDLink Family

1.0 Overview

On-Board Diagnostics, Second Generation (OBD-II) is a set of standards for implementing a computer-based system to control emissions from vehicles. It was first introduced in the United States in 1994 and became a requirement on all 1996 and newer US cars and light trucks. Other countries, including Canada, parts of the European Union, Japan, Australia, and Brazil adopted similar legislation. A large portion of the modern vehicle fleet supports OBD-II or one of its regional variants.

Among other things, OBD-II requires that each compliant vehicle be equipped with a standard diagnostic connector (DLC) and describes a standard way of communicating with the vehicle's computer, also known as the ECU (Electronic Control Unit). A wealth of information can be obtained by tapping into the OBD bus, including the status of the malfunction indicator light (MIL), diagnostic trouble codes (DTCs), inspection and maintenance (I/M) information, freeze frames, VIN, hundreds of real-time parameters, and more.

The OBDLink® family of devices is a set of OBD to UART interpreters that can be used to convert messages between any of the OBD-II protocols currently in use (as well as some proprietary OBD protocols) and UART. They are fully compatible with the *de facto* industry standard ELM327 command set. Based on a 16-bit processor core, the OBDLink® devices offer more features and better performance than any other ELM327 compatible IC.

2.0 Objective of This Manual

This manual describes the architecture, features, and the command set of the OBDLink family of OBD interpreters.

Note that not all commands, protocols, and features are supported by all devices. You should consult the respective device's data sheet for device-specific details, such as:

- List of supported protocols and features
- Pinout and packaging details
- Device-specific electrical specifications and characteristics
- Reference schematics

3.0 OBDLink Product Family

3.1 OBDLink Devices

| Device ID | Status | Product Name | Description |
|-----------|--------------------|-------------------------------------|---|
| STN1000 | Obsolete | OBDLink CI | CAN/ISO/KWP to USB |
| STN1100 | OoP ⁽¹⁾ | OBDLink | OBD to USB w/ optional Bluetooth/Wi-Fi add-on modules |
| STN1101 | OoP ⁽¹⁾ | OBDLink S | OBD to RS232 |
| STN1120 | OoP ⁽¹⁾ | microOBD 200 | OBD to UART interface in a DIP-24 package |
| STN1130 | Active | OBDLink SX | Low cost OBD to USB |
| STN1150 | OoP ⁽¹⁾ | OBDLink MX Bluetooth | OBD to Bluetooth w/ support for MS CAN and SW CAN |
| STN1151 | OoP ⁽¹⁾ | OBDLink MX Bluetooth ⁽²⁾ | OBD to Bluetooth w/ support for MS CAN and SW CAN |
| STN1152 | OoP ⁽¹⁾ | OBDLink MX Wi-Fi ⁽³⁾ | OBD to Wi-Fi w/ support for MS CAN and SW CAN |
| STN1155 | Active | OBDLink LX Bluetooth | OBD to Bluetooth |
| STN2230 | Active | OBDLink EX | Low cost OBD to USB with support for MS CAN |
| STN2255 | Active | OBDLink MX+ ⁽³⁾ | OBD to Bluetooth w/ support for MS CAN and SW CAN |

Note 1. Out of production

Note 2. Revision 2

Note 3. Supports iOS devices

3.2 OBDLink ICs

| Device ID | Status | Product Name | Description |
|-----------|---------------------|--------------|--|
| STN1110 | NRND ⁽¹⁾ | STN1110 | OBD to UART interpreter |
| STN1170 | NRND ⁽¹⁾ | STN1170 | OBD to UART interpreter w/ support for MS CAN and SW CAN |
| STN2100 | Active | STN2100 | OBD to UART interpreter |
| STN2120 | Active | STN2120 | OBD to UART interpreter w/ support for MS CAN and SW CAN |

Note 1. In production, not recommended for new designs

4.0 Feature Highlights

- Fully compatible with the **ELM327 AT command set**
- Feature-rich parallel extended **ST command set**
- UART baud rates from **38 bps to 10 Mbps⁽¹⁾**
- Large (up to 4KB) data transfers⁽²⁾
- **Safe, secure bootloader** for easy firmware updates
- Support for **all legislated OBD-II protocols**:
 - **ISO 15765** (CAN)
 - **ISO 14230** (Keyword Protocol 2000, KWP2K)
 - **ISO 9141** (Asian, European, Chrysler vehicles)
 - **SAE J1850 VPW** (GM vehicles)
 - **SAE J1850 PWM** (Ford vehicles)
 - **SAE J1939** (Heavy Duty vehicles)
- Support for **non-legislated protocols** (not available in all devices):
 - **ISO 11898** (raw CAN)
 - **SAE J2818**
 - **SAE J2411** (GMW3089, Single Wire CAN, GMLAN)
 - **Ford MS-CAN** (Medium Speed CAN)
- Superior **automatic protocol detection** algorithm
- **Large memory buffer**
- Voltage input for **battery monitoring**
- **PowerSave mode with multiple sleep and wakeup triggers**

Note 1: Maximum theoretical baud rate. Actual maximum baud rate is application dependent and may be limited by driver hardware.

Note 2: Only available on specific OBDLink devices. See STPX for details.

5.0 Typical Applications

- Fleet management and tracking applications
- Usage-based auto insurance
- Telematics
- Automotive diagnostic scan tools and code readers
- OBD data collection
- ECU reflashing

6.0 Communicating with the OBDLink

The OBDLink uses a three-wire UART connection that is CMOS/TTL compatible. The **default** UART settings are as follows:

- Baud rate:
 - ICs and modules: 9600 bps
 - USB OBDLink adapters: 115200 bps
 - Bluetooth OBDLink adapters: Varies by device and cannot be changed
- 8 data bits
- No parity bit
- One stop bit

The baud rate can be changed in software (see STSBR).

Once powered and connected, the OBDLink will display the startup message:

```
ELM327 v1.4b
```

```
>
```

The OBDLink sends the ‘>’ (“prompt”) character, to signal that it is ready for more input. User software should always wait for the prompt before sending the next command.

There are three types of commands recognized by the OBDLink: **AT commands**, **ST commands**, and **OBD requests**.

The OBDLink is designed to fully emulate the ELM327 **AT command set** supported by many existing OBD software applications. AT commands begin with “AT” and are intended for the IC. They cause the OBDLink to carry out some action – change or display settings, perform a reset, and so on. A list of supported AT commands, and their descriptions can be found in Section 7.0.

To provide additional functionality while maintaining compatibility with the ELM327 command set, the OBDLink supports a parallel **ST command set**, described in Section 8.0.

OBD requests are messages that are transmitted on the OBD bus. Only ASCII hexadecimal digits (0-9 and A-F) are allowed in OBD requests.

Only ASCII alpha characters, numbers, backspaces, and the carriage return are accepted on the UART, spaces are ignored. All commands must terminate with a carriage return (0x0D).

By default, responses from the OBDLink are terminated with a carriage return (0x0D). ATL1 command can be used to have the OBDLink append line feeds (0x0A) to the carriage returns.

Sending a single carriage return character repeats the last command.

7.0 AT Commands

AT commands cause the OBDLink to carry out some action (e.g., print device description or reboot) or change the default settings (turn echo off, change message header bytes, etc.). Every effort was made to maintain compatibility with legacy ELM327 software, and with few exceptions, the AT commands work exactly as they would on the ELM327.

Section 7.1 is a summary of all available AT commands. For detailed descriptions of each command, see Section 7.2.

7.1 AT Command Summary

AT commands in this section are grouped by function, for quick reference. The ‘Status’ column indicates the level of support for each command:

- **supported:** this command is available
- **deprecated:** this command is supported for backwards compatibility, but its use is discouraged because it serves no useful purpose on the OBDLink (e.g., ATFE) or because a superior alternative exists. Typically, the alternative is an ST command that is more powerful, flexible, or easier to use. See the command’s description (in Section 7.2) for more information.
- **not yet supported:** this command will be available in the near future

Asterisk (*) next to a setting means it’s the default value.

Table 1 – General AT Commands

| Command | Description | Status |
|------------------------|--------------------------------------|------------|
| <CR> | Repeat last command | supported |
| ATBRD <i>divisor</i> | Try baud rate divisor <i>divisor</i> | deprecated |
| ATBRT <i>timeout</i> | Set baud rate timeout | deprecated |
| ATD | Set all settings to defaults | supported |
| ATE 1/0 | Echo on*/off | supported |
| ATFE | Forget events | deprecated |
| ATI | Print ELM327 version ID string | supported |
| ATL 1/0 | Line feeds on/off* | supported |
| ATLP | Enter low power mode | deprecated |
| ATM 1/0 | Memory on*/off | supported |
| ATRD | Read the stored data byte | supported |
| ATSD <i>hh</i> | Save data byte <i>hh</i> | supported |
| ATWS | Warm start | supported |
| ATZ | Reset device | supported |
| AT@1 | Display device description | supported |
| AT@2 | Display device identifier | supported |
| AT@3 <i>cccccccccc</i> | Store device identifier | supported |

Table 2 – Programmable Parameter AT Commands

| Command | Description | Status |
|-----------------------------|---|-----------|
| ATPP <i>xx</i> OFF | Disable PP <i>xx</i> | supported |
| ATPP <i>xx</i> ON | Enable PP <i>xx</i> | supported |
| ATPP <i>xx</i> SV <i>yy</i> | For PP <i>xx</i> , set value to <i>yy</i> | supported |
| ATPPS | Print PP summary | supported |

OBDLink Family

Table 3 – Voltage Reading AT Commands

| Command | Description | Status |
|------------------|---|------------|
| ATCV <i>dddd</i> | Calibrate voltage to <i>dd.dd</i> volts | deprecated |
| ATRV | Read voltage | deprecated |

Table 4 – Other AT Commands

| Command | Description | Status |
|---------|------------------------|------------|
| ATIGN | Read SLEEP input level | deprecated |

Table 5 – OBD AT Commands

| Command | Description | Status |
|----------------------|--|------------|
| ATAL | Allow long (>7 byte) messages | supported |
| ATAR | Automatically receive | deprecated |
| ATAT <i>mode</i> | Adaptive timing off, auto1*, auto2 | supported |
| ATBD | Buffer dump | deprecated |
| ATBI | Bypass initialization sequence | deprecated |
| ATDP | Describe current protocol | deprecated |
| ATDPN | Describe current protocol by number | deprecated |
| ATH <i>1/0</i> | Headers on/off* | supported |
| ATMA | Monitor all | deprecated |
| ATMR <i>hh</i> | Monitor for receiver <i>hh</i> | deprecated |
| ATMT <i>hh</i> | Monitor for transmitter <i>hh</i> | deprecated |
| ATNL | Normal length messages* (7 bytes max) | supported |
| ATPC | Protocol close | deprecated |
| ATR <i>1/0</i> | Responses on*/off | supported |
| ATRA <i>hh</i> | Set the receive address to <i>hh</i> | deprecated |
| ATS <i>1/0</i> | Print spaces on*/off | supported |
| ATSH <i>header</i> | Set request message header | supported |
| ATSP <i>protocol</i> | Set protocol and save it | deprecated |
| ATSR <i>hh</i> | Set receive address to <i>hh</i> | deprecated |
| ATSS | Use standard OBD protocol search order (J1978) | deprecated |
| ATST <i>hh</i> | Set timeout to <i>hh</i> x 4 ms | deprecated |
| ATTA <i>hh</i> | Set tester address to <i>hh</i> | supported |
| ATTP <i>protocol</i> | Try protocol <i>protocol</i> | deprecated |

Table 6 – J1850 Specific AT Commands (protocols 1 and 2)

| Command | Description | Status |
|-------------------|----------------------------------|-----------|
| ATIFR <i>mode</i> | IFRs off, auto*, or on | supported |
| ATIFR <i>H/S</i> | IFR value from header* or source | supported |

Table 7 – ISO Specific AT Commands (protocols 3 to 5)

| Command | Description | Status |
|-------------------------------|---|----------------------------|
| ATFI | Perform a fast bus initialization | supported |
| ATIB 10 48 96 | Set ISO baud rate to 10400*/4800/9600 | deprecated |
| ATIIA <i>hh</i> | Set the ISO (slow) init address | supported |
| ATKW | Display ISO key word | supported |
| ATKW 1 0 | Key word checking on*/off | supported |
| ATSI | Perform a 5-baud bus initialization | supported |
| ATSW <i>hh</i> | Set wakeup interval to <i>hh</i> x 20 ms | supported |
| ATWM <i>message</i> | Set wakeup message | supported |

Table 8 – CAN Specific AT Commands (protocols 6 to C)

| Command | Description | Status |
|---------------------------------|--|----------------------------|
| ATCEA | Turn off CAN extended addressing | deprecated |
| ATCEA <i>hh</i> | Use CAN extended address <i>hh</i> | deprecated |
| ATCAF 1 0 | Automatic formatting on*/off | supported |
| ATCF <i>pattern</i> | Set CAN hardware filter pattern | supported |
| ATCFC 1 0 | Flow control on*/off | supported |
| ATCM <i>mask</i> | Set CAN hardware filter mask | supported |
| ATCP <i>hh</i> | Set CAN priority to <i>hh</i> (29 bit only) | supported |
| ATCRA <i>pattern</i> | Set CAN hardware filter | supported |
| ATCS | Show CAN status counts | supported |
| ATCSM 1 0 | Silent monitoring on*/off | deprecated |
| ATD 1 0 | Display of the DLC on/off* | supported |
| ATFCSD <i>data_bytes</i> | Set flow control data | supported |
| ATFCSH <i>fc_header</i> | Set flow control header | supported |
| ATFCSM <i>mode</i> | Set flow control mode | supported |
| ATPB <i>xx yy</i> | Set protocol B options and baud rate | supported |
| ATRTR | Send an RTR message | supported |
| ATV 1 0 | Variable DLC on/off* | supported |

Table 9 – J1939 Specific AT Commands

| Command | Description | Status |
|---------------------------|--|----------------------------|
| ATDM1 | Monitor for DM1 messages | supported |
| ATJ <i>E/S</i> | Use ELM* or J1939 SAE data format | supported |
| ATJHF 1 0 | Header formatting on*/off | supported |
| ATJTM 1 5 | Set ATST timeout multiplier to 1*/5 | deprecated |
| ATMP <i>pgn</i> | Monitor for PGN <i>pgn</i> | supported |
| ATMP <i>pgn n</i> | Monitor for PGN <i>pgn</i> and get <i>n</i> messages | supported |

7.2 AT Command Descriptions

ATAL

Allow long messages. SAE J1979 limits the number of data bytes in an OBD message to seven, and by default, OBDLink enforces this limit for reception.

The ATAL command removes the limit, allowing OBDLink to accept OBD requests and replies longer than 7 bytes (up to the maximum supported by the currently selected OBD protocol).

The default is ATNL (normal length, ATAL off).

Differences from ELM327: OBD requests are not limited to 8 bytes.

ATAR

Automatically set the receive address. This command is supported for backwards compatibility only. Use STFA instead.

ATAT mode

Set adaptive timing mode. Sometimes, a single OBD request results in multiple response frames. The time between frames varies significantly depending on the vehicle year, make, and model – from as low as 5 ms up to 100 ms. After OBDLink receives an OBD frame, it waits a preset amount of time (called a ‘timeout’) for the next frame, before displaying the command prompt. The timeout cannot be too short to avoid missing frames, but a long timeout negatively impacts performance.

OBDLink can measure the actual time between frames, and automatically adjust the timeout value to get the best throughput for a given OBD bus. This algorithm is called “adaptive timing”, and it has three modes:

| Mode | Description |
|------|---|
| 0 | Adaptive timing off (fixed timeout) |
| 1 | Adaptive timing on, normal mode. This is the default option. |
| 2 | Adaptive timing on, aggressive mode. This option may increase throughput on slower connections, at the expense of slightly increasing the risk of missing frames. |

OBDLink uses the same algorithm for mode 1 and 2: it measures the actual times between responses over several messages, takes the longest time, and adds a “safety buffer” (a percentage of the actual measured time). Mode 2 achieves better throughput because it uses a smaller safety buffer than mode 1.

Note that OBDLink will always wait the maximum time defined by the STPTO/ATST timeout for the *first* frame.

ATAT has no effect on the J1939 protocols.

ATBD

Buffer dump. This command is used by the ELM327 for debugging purposes, and is supported for backwards compatibility only. OBDLink always returns all zeroes.

```
>ATBD  
00 00 00 00 00 00 00 00 00 00 00 00 00
```

ATBI

Bypass initialization on ISO 9141 or ISO 14230. This command is supported for backwards compatibility only. Use STPO instead.

ATBRD divisor

Set UART baud rate divisor. This command is supported for backwards compatibility only. Use STBR or STSBR instead.

ATBRT timeout

Set baud rate timeout. This command is supported for backwards compatibility only. Use STBRT instead.

ATCAF 1/0

Turn CAN Auto Formatting on or off. When CAN Auto Formatting is on (ATCAF 1), OBDLink will:

- Automatically generate Protocol Control Information (PCI) byte for requests
- Omit PCI bytes from responses
- Omit padding bytes from responses
- Ignore Remote Transfer Request (RTR) frames
- Ignore messages with invalid PCI (except when monitoring, in which case OBDLink will print the message followed by ‘<DATA ERROR’)
- For multi-frame responses, print the data length on a separate line, and prefix each frame’s data bytes with the sequence number (SN) followed by a colon (‘:’)
- While monitoring, prefix flow control frames with ‘FC:’

Example:

```
>ATCAF 1
OK
```

```
>0902
014
0: 49 02 01 31 47 31
1: 4A 43 35 34 34 52
2: 37 32 35 32 33 36 37
```

Note that ATH1 will override much of the ATCAF1 formatting of the responses, although OBDLink will still generate the PCI byte for requests:

```
>ATH 1
OK
```

```
>ATCAF 1
OK
```

```
>0902
7E8 10 14 49 02 01 31 47 31
7E8 21 4A 43 35 34 34 52
7E8 22 37 32 35 32 33 36 37
```

Headers on (ATH 1), CAN auto formatting on (ATCAF 1) are the recommended settings for most applications.

When CAN Auto Formatting is off (ATCAF 0), OBDLink will not automatically generate the PCI byte for requests, and it will print all messages as received:

```
>ATCAF 0
OK
```

```
>02 0902
10 14 49 02 01 31 47 31
21 4A 43 35 34 34 52
22 37 32 35 32 33 36 37
```

In this example, the first byte of the OBD request ('02') is the PCI byte.

Remember that with auto formatting off, OBDLink still adds padding bytes to requests. To override this behavior, use the ATV1 command (variable DLC on).

ATCEA

Turn off CAN Extended Addressing. This command is supported for backwards compatibility only. Use STCAF instead.

ATCEA hh

Turn on CAN Extended Addressing and set the Extended Address to *hh*. This command is supported

for backwards compatibility only. Use STCAF instead.

ATCF *pattern*

Set the CAN hardware filter pattern. This command accepts both 11-bit and 29-bit CAN IDs.

```
>ATCF 7E0
OK
```

```
>ATCF 18 DB 00 00
OK
```

ATCFC 1/0

Turn automatic CAN flow control on or off. Note that OBDLink never sends flow control frames while monitoring.

ATCM *mask*

Set the CAN hardware filter mask. This command accepts both 11-bit and 29-bit CAN IDs.

```
>ATCM FF0
OK
```

```
>ATCM FF FE 00 00
OK
```

ATCP *hh*

Set CAN Priority bits of a 29-bit CAN ID. This command sets the five most significant bits of transmitted frames. Use ATSH to assign the remaining 24 bits. The three most significant bits of the parameter are ignored.

```
>ATCP 18
OK
```

ATCRA *pattern*

This command sets the CAN hardware filter pattern to *pattern*, and the mask to all 1's. If the parameter *pattern* contains any non-hex characters, those hex values will be treated as don't cares. Send ATCRA (without any parameters) to reset the CAN hardware filter to its default state.

```
>ATCRA 7E9
OK
```

```
>ATCRA 18 DA F1 10
OK
```

```
>ATCRA 7EX
OK
```

OBDLink Family

The last example shows how to use don't cares. In the example, all IDs that start with 7E will be allowed to pass (e.g., 7E0, 7E1, etc.).

ATCS

Print CAN status counts. This command displays the number of transmit and receive error counts, as a hexadecimal number.

Once the transmit error count exceeds FF (decimal 256), the status will change to 'OFF', and the CAN peripheral will enter bus-off state. OBDLink will automatically exit the bus-off state, and reset both transmit and receive counters to zero, after receiving 128 occurrences of 11 consecutive recessive bits.

You can use the STPC command to manually reset the counters.

ATCSM 1/0

Turn CAN silent monitoring on or off. This command is supported for backwards compatibility only. Use STCMM instead.

ATCV dddd

Calibrate voltage measurement. This command is supported for backwards compatibility only. Use STVCAL instead.

Differences from ELM327: the maximum accepted value is 6553.

ATD

Restore default settings. This command changes all runtime settings back to their default state, without rebooting the OBDLink. Affected settings include:

- Tester address
- Last saved protocol
- Protocol baud rate
- Message headers
- Message filters
- Timeouts

ATD 1/0

Turn printing of CAN DLC on or off. The DLC will be printed between the CAN ID and data bytes, but only if the headers are on (ATH1). By default, DLC printing is off (ATD0). The default setting is controlled by programmable parameter PP 29.

ATDM1

Continuously monitor for SAE J1939 DM1 messages.

ATDP

Display current OBD protocol. This command is supported for backwards compatibility only. Use STPRS instead.

ATDPN

Display protocol number. This command is supported for backwards compatibility only. Use STPR instead.

ATE 1/0

Turn echo on or off. By default, echo is on (ATE1) and OBDLink transmits all received characters back to the host.

ATFCSD *data_bytes*

Set flow control data. The *data_bytes* parameter can be from 1 to 5 bytes long. If required by the protocol, the remainder of the message data bytes is set to the default CAN filler byte. This command is only relevant when flow control mode 1 or 2 has been enabled (see ATFCSM).

Example below specifies a block size of 2, and a separation time (STmin) of 16 ms.

```
>ATFCSD 30 02 10
OK
```

ATFCSH *fc_header*

Set flow control header (CAN ID). This command accepts both 11-bit and 29-bit CAN IDs, and is only relevant in flow control mode 1 (see ATFCSM).

ATFCSM *mode*

Set flow control mode. This command determines how OBDLink responds to the first frame (FF) of a multi-segment message when automatic flow control is enabled. Default is mode 0.

| Mode | Description |
|------|-------------------------------------|
| 0 | Automatic |
| 1 | User defined CAN ID and data |
| 2 | Automatic CAN ID, user defined data |

You must define the data (and CAN ID, for mode 1) before using this command (see ATFCSD and ATFCSH).

ATFE

This command is used by the ELM327 to work around a silicon bug. On OBDLink, this command is a no-op: it returns 'OK' for backwards compatibility but has no effect on the device behavior.

ATFI

Perform ISO 14230-4 fast initialization.

ATH 1/0

Turn display of headers on or off. By default, headers are off (ATH0) and OBDLink will print only the data bytes of an OBD message. Turn headers on (ATH1) to display the headers, check byte, and CAN PCI byte.

ATI

Identify device. This command prints the ELM device ID string (e.g., 'ELM327 v1.4b').

Differences from ELM327:

- **The default device ID string reported by this command corresponds to the maximum ELM327 version that is completely supported.**
- **Commands from newer versions may be supported.**
- **This string can be changed using the STSATI command.**

ATIB 10/48/96

Set ISO baud rate to 10400, 4800, or 9600 baud. This command is supported for backwards compatibility only. Use STPBR instead.

ATIFR mode

Select IFR mode (SAE J1850).

| Mode | Description |
|------|--|
| 0 | Disable sending of IFR |
| 1 | Determined by the 'K' bit of the first header byte of the received message |
| 2 | Always send IFR |

The default is ATIFR 1.

ATIFR H/S

Use IFR from header or source address. By default, OBDLink sets the value of IFR to the source address specified in the header of the request (ATIFR H).

ATIFR S instructs OBDLink to use the source address specified by PP 06 or ATTA, even if it is different from the source address byte specified in the header of the request.

ATIGN

Report logic level of the SLEEP input pin. This command is supported for backwards compatibility only. Use STSLXS instead.

ATIIA hh

Set the ISO 5-baud init address to hh. By default, the address used during ISO 9141-2 and ISO 14230-4 5-baud initialization sequences is 0x33, but can be set to any arbitrary value with this command – for example, when physically addressing an ECU.

ATJ E/S

Use big-endian ('left-to-right') or little-endian ('right-to-left') format for PGN requests.

The SAE J1939 standard specifies that PGN requests must be transmitted using the little-endian ('right-to-left') format. For example, to request engine temperature (PGN 00FEEE), the data bytes must be sent on the J1939 bus as 'EE FE 00'.

The factory default option is ATJE, which means that OBDLink will automatically reverse the order.

Use the ATJS command to send the bytes in the same order as specified.

This command affects only 3-byte PGN requests. All other requests are always transmitted as entered.

ATJHF 1/0

Turn SAE J1939 header formatting on/off.

This command specifies whether OBDLink should isolate the priority bits and group the PGN information for printing (default, ATJHF 1) or print all bytes separately (ATJHF 0).

ATJTM 1/5

Set the J1939 ATST timeout multiplier. This command is supported for backwards compatibility only. Use STPTO instead.

ATKW

Display keywords sent to OBDLink by the ECU during bus initialization (ISO 9141 and ISO 14230 protocols).

ATKW 1/0

Keyword validation on or off.

The default setting is ATKW 1: OBDLink requires that keywords received during the initialization sequence match the values specified in ISO 9141-2 and ISO 14230-4. If there is no match, the initialization sequence will fail ('UNABLE TO CONNECT' or 'BUS INIT: ...ERROR').

Use ATKW 0 to turn off keyword validation.

ATL 1/0

Turn linefeeds on or off.

If linefeeds are on (ATL 1), OBDLink will follow every carriage return character with a linefeed character. In other words, each line will be terminated with CR+LF. The default is linefeeds off (ATL 0).

OBDLink Family

ATLP

Enter Low Power mode. This command is supported for backwards compatibility only. Use STSLEEP instead.

ATM 1/0

Turn memory on or off. By default, memory is on, and OBDLink records the last detected protocol in non-volatile memory.

ATMA

Monitor all messages. This command is supported for backwards compatibility only. Use STMA instead.

ATMP *pgn*

Monitor for PGN *pgn*. The *pgn* parameter can be either 2 or 3 bytes long. If a 2-byte parameter is specified, the first byte of the PGN is set to 00.

This command returns an error if a non-J1939 protocol is selected. Only the responses to the PGN requests are displayed (requests are omitted).

ATMP *pgn n*

Monitor for PGN *pgn*, return *n* messages. Similar to ATMP *pgn*, but the value 'n' may be any single hex digit, 1 thru F.

ATMR *hh*

Monitor for Receiver *hh*. This command is supported for backwards compatibility only. Use the STM command with filters instead.

ATMT *hh*

Monitor for Transmitter *hh*. This command is supported for backwards compatibility only. Use the STM command with filters instead.

ATNL

Enforce normal message length. SAE J1979 limits the number of data bytes in an OBD message to seven, and by default, OBDLink enforces this limit. Use the ATAL command to allow OBDLink to receive longer messages.

Differences from ELM327: message length limit is not enforced for OBD requests.

ATPB *xx yy*

Set Protocol B parameters. Use this command to configure Protocol B (USER1) options and baud rate. The *xx* parameter corresponds to the options set by PP 2C, while *yy* corresponds to PP 2D.

ATPC

Close protocol. This command is supported for backwards compatibility only. Use STPC instead.

ATPP *xx OFF*

Turn off programmable parameter *xx*. See Section 7.3 for more information.

To turn off all programmable parameters at the same time, specify 'FF' as the parameter (e.g., ATPP FF OFF).

ATPP *xx ON*

Turn on programmable parameter *xx*. See Section 7.3 for more information.

To turn on all programmable parameters at the same time, specify 'FF' as the parameter (e.g., ATPP FF ON).

ATPP *xx SV yy*

Set the value of programmable parameter *xx* to *yy*. See Section 7.3 for more information.

ATPPS

Print programmable parameter summary. The format is <pp_num>:<pp_value> <on/off>. The <on/off> status is encoded as either 'N' (ON) or 'F' (OFF). See Section 7.3 for more information.

ATR 1/0

Turn responses on or off.

By default, after sending an OBD request, OBDLink waits for, acknowledges (if applicable), and prints the OBD responses before returning to the command prompt.

If the ATR 0 option is enabled, OBDLink will send the request, and immediately return to the command prompt – without acknowledging or printing any responses.

ATRA *hh*

Set the Receive Address to *hh*. This command is supported for backwards compatibility only. Use ST filter commands instead.

ATRD

Read data byte stored with the ATSD command.

ATRTR

Send an RTR (Remote Transmission Request) CAN frame. The frame will be sent using current headers (see ATSH).

By default, OBDLink ignores (doesn't print) RTR frames. To enable printing of RTR frames, turn on the headers (ATH 1) or turn CAN formatting off (ATCAF 0).

ATRV

Read voltage. This command is supported for backwards compatibility only. Use STVR instead.

Differences from ELM327: voltages above 65.5V will print as --.V.

ATS 1/0

Turn printing of spaces in OBD responses on or off. By default, spaces are on (ATS 1) and OBDLink prints a space after each ASCII hex character. To get better performance, turn spaces off (ATS 0).

ATSD hh

Save data byte *hh* in non-volatile memory. Use ATRD to retrieve the data byte.

ATSH header

Set the header of transmitted OBD messages to *header*. Exactly what this command does depends on the currently selected protocol.

J1850, ISO 9141. Set all header bytes, as specified (e.g., ATSH 61 6A F1)

ISO 14230. Keyword Protocol 2000 messages can have 1, 2, 3, or 4 byte headers. Which header format is used, depends on the address and length bits of the format byte (the first byte of header):

| | | | | | | | |
|----|----|----|----|----|----|----|----|
| A1 | A0 | L5 | L4 | L3 | L2 | L1 | L0 |
|----|----|----|----|----|----|----|----|

Bits A1 and A0 define the address mode:

| A1 | A0 | Mode |
|----|----|------------------------|
| 0 | 0 | No address information |
| 0 | 1 | Exception mode (CARB) |
| 1 | 0 | Physical addressing |
| 1 | 1 | Functional addressing |

Bits L5 through L0 define whether an additional length byte is used. If the length bits are all set to zero, the STN1170 will automatically insert a length byte. If the value of L5...L0 is any number other than zero, the STN IC will automatically calculate the length of the message and correctly encode it using the length bits. In this case, the additional length byte is not used.

| Header Length | A1 | A0 | L5-L0 | Length Byte |
|---------------|----|----|----------|-------------|
| 1-byte | 0 | 0 | non-zero | not present |
| 2-byte | 0 | 0 | 00 0000 | present |
| 3-byte | 0 | 1 | 10 1000 | not present |
| | | | 00 1000 | not present |
| | 1 | 0 | non-zero | not present |
| 4-byte | 1 | 1 | non-zero | not present |
| | 1 | 0 | 00 0000 | present |
| 4-byte | 1 | 1 | 00 0000 | present |

Same as above, with one exception: if the second nibble of the first header byte is 0 (e.g., ATSH C0 33 F1), OBDLink will assume that a 4-byte header is in use. The fourth header byte will be automatically set to the message length. For example, if you send 10 data bytes, the fourth header byte will be set to 0x0A.

11-bit CAN. Can be set using the “normal”, 3-byte format (e.g., ATSH 00 07 DF), or the “shorthand” 3-nibble version: ATSH 7DF.

29-bit CAN: ATSH sets the 24 least significant bits of the CAN ID. To set the 5 most significant bits of the CAN ID, use the ATCP command:

```
>ATCP 18
OK
```

```
>ATSH DB 33 F1
OK
```

ATSI

Perform slow (5-baud) initialization on ISO 9141-2 or ISO 14230-4.

ATSP protocol

Set OBD protocol preset. This command is supported for backwards compatibility only. Use STP *p* instead.

ATSR hh

Set receive address. This command is supported for backwards compatibility only. Use ST filter commands instead. See Section 8.10, “Filtering ST Commands”

ATSS

Set standard protocol search sequence. This command is implemented as a no-op, since OBDLink already uses the standard search order, specified in SAE J1978. It returns ‘OK’ for backwards compatibility but has no effect on the device behavior.

OBDLink Family

ATST *hh*

Set OBD response timeout. This command is supported for backwards compatibility only. Use STPTO instead.

ATSW *hh*

Set the wakeup interval (time between ISO 9141 and ISO 14230 “keep-alive” messages). The actual value is *hh* x 20 ms. For example, to set the wakeup interval to 200 ms, use ATSW 0A.

ATSW 00 is a special case: it stops the sending of keep-alive messages.

ATTA *hh*

Set tester address to *hh*. This command changes the source address used for transmitted messages (including periodic wake-up messages). If Auto Receive (see ATAR) mode is on, this command updates the receive filter to accept messages addressed to *hh*.

Note that you must use this command before opening a protocol, either explicitly (STPO) or by sending a request. If you want to use ATTA to change the target address in the middle of a communication session, you must follow this sequence:

1. Close the protocol (STPC)
2. Change the address (ATTA)
3. Reopen the protocol (STPO)

ATTP *protocol*

Try protocol *protocol*. This command is supported for backwards compatibility only. Use STP instead.

ATV *1/0*

Variable DLC on or off. When one of the CAN protocols is selected, this command controls whether variable or fixed (DLC = 8) Data Length Code is used. The default is fixed DLC (ATV 0).

ATWM *message*

Use a custom ISO wakeup message. The parameter must be a complete message, including the header bytes. The checksum is calculated automatically (use the STPCB 0 command to turn off this feature).

Differences from ELM327: maximum size of the message can exceed 6 bytes, and is limited only by available RAM.

ATWS

Warm start. This command reboots OBDLink, but unlike ATZ, skips the LED test and keeps the user selected baud rate (selected using ATBRD, STBR, or STSBR).

ATZ

Reboot OBDLink.

AT@1

Display ELM device description string.

Differences from ELM327: user can change device description string using the STS@1 command.

AT@2

Display device identifier set by the AT@3 command. Returns ‘?’ if no identifier has been set.

AT@3 *cccccccccccc*

Set device identifier reported by the AT@2 command. The identifier string must be 12 characters long, and only printable ASCII characters are accepted.

Warning: this command can only be used one time. Once the AT@2 string is set, it cannot be changed.

7.3 Programmable Parameters

Programmable parameters are user-settable configuration values stored in non-volatile memory.

Each programmable parameter (PP) has two attributes: value and state (on or off). On startup, OBDLink checks to see if any PPs are on, and uses the values to modify the default configuration.

To change a default setting, first set its value (a hexadecimal number), then turn it on. For example, suppose you wanted to change the default tester source address (controlled by PP 06) from F1 to F2.

First, you would set its value:

```
>ATPP 06 SV F2
OK
```

At this point, the tester address is still F1. For the change to take effect, you must turn PP 06 on:

```
>ATPP 06 ON
OK
```

Now, if you use the ATPPS command to display a summary of all programmable parameters, you will see that the value of PP 06 is 'F2', and that it is ON ('F' means 'OFF' and 'N' means 'ON'):

```
>ATPPS
00:FF F 01:FF F 02:FF F 03:32 F
04:01 F 05:FF F 06:F2 N 07:09 F
08:FF F 09:00 F 0A:0A F 0B:FF F
0C:23 F 0D:0D F 0E:5A F 0F:FF F
10:0D F 11:00 F 12:FF F 13:F4 F
14:FF F 15:0A F 16:FF F 17:92 F
18:00 F 19:28 F 1A:FF F 1B:FF F
1C:FF F 1D:FF F 1E:FF F 1F:FF F
20:FF F 21:FF F 22:FF F 23:FF F
24:00 F 25:00 F 26:00 F 27:FF F
28:FF F 29:FF F 2A:00 F 2B:02 F
2C:E0 F 2D:04 F 2E:80 F 2F:0A F
```

Programmable parameters fall into several categories, depending on when the change takes effect:

| Type | When change is effective |
|------|--|
| I | Immediately |
| P | After a full power-on reset. This can be accomplished by sending ATZ, toggling the RESET pin, or cycling power off/on. |
| R | After any reset. Same as type P, plus ATWS. |
| D | After defaults are restored. Same as R, plus ATD. |

All programmable parameters can be turned off and reset to their default values by holding RST_NVM input low for a predetermined amount of time (between 5 and 20 seconds, specified in the device datasheet or user manual). After RST_NVM input is released, device will set all factory defaults, and then perform an ATZ reset. The same operation can also be performed via the STRSTNVM command.

Table 10 – Programmable Parameter Summary

| PP | Description | Values | Default | Type |
|----|---|---------------------|----------------|------|
| 00 | Perform ATMA after power up or reset | 00 = ON FF = OFF | FF (OFF) | R |
| 01 | Printing of header bytes (ATH default setting) | 00 = ON FF = OFF | FF (OFF) | D |
| 02 | Allow long messages (ATAL default setting) | 00 = ON FF = OFF | FF (OFF) | D |
| 03 | NO DATA timeout time (ATST/STPTO default setting) setting = value x 4.096 ms | 00 to FF | 19 (102 ms) | D |
| 04 | Adaptive timing mode (ATAT default setting) | 00 to 02 | 01 | D |

OBDLink Family

| PP | Description | Values | Default | Type |
|----|---|----------------------------|--------------------|------|
| 06 | OBD source (tester) address. Not used for J1939 protocols. | 00 to FF | F1 | D |
| 07 | Last protocol to try during automatic searches | 01 to 0C | 09 | I |
| 09 | Character echo (ATE default setting) | 00 = ON FF = OFF | 00 (ON) | R |
| 0A | Line feed character | 00 to FF | 0A | R |
| 0C | Default UART baud rate setting = 4,000,000 ÷ value | 02, 04, 06 to FF | 23 (115.2 kbps) | P |
| 0D | Carriage return character | 00 to FF | 0D | R |
| 0E | ELM327 Low Power mode control. See Section 15.1.2 for more details. bit7: Master enable 0: off 1: on Controls ELM327 Low Power/Native PowerSave mode setting. See Section 15.1, "Control Modes" for more details. bit6: PWR_CTRL pin "power on" level 0: low 1: high Logic level of the PWR_CTRL pin when the IC is running normally. This bit affects only the stand-alone ICs; it is ignored for other OBDLink devices. bit5: UART inactivity sleep trigger 0: disabled 1: enabled Enter sleep mode when UART inactivity timeout occurs. UART wakeup trigger is always enabled in ELM327 Low Power mode. bit4: UART inactivity timeout setting 0: 5 min 1: 20 min bit3: UART inactivity alert 0: disabled 1: enabled Transmit 'ACT ALERT' on UART 1 minute before inactivity timeout bit2: SLEEP input sleep trigger 0: disabled 1: enabled Enter sleep mode when SLEEP input goes low. SLEEP input wakeup trigger is always enabled in ELM327 Low Power mode. bit1: SLEEP input wakeup delay 0: 1 sec 1: 5 sec Time SLEEP input must stay high before device wakes up. bit0: reserved, leave set to 0 | 00 to FF | 5A (01011010) | R |
| 10 | J1850 voltage settling time setting = value × 4.096 ms | 00 to FF | 0D (53 ms) | I |
| 11 | J1850 Break Signal monitor enable (reports BUS ERROR if break signal duration limits are exceeded) | 00 = ON FF = OFF | 00 (ON) | D |
| 12 | PWM/VPW output pin polarity normal = PWM/VPW (logic high for PWM, logic low for VPW) invert = PWM/VPW (logic low for PWM, logic high for VPW) This parameter is valid only for stand-alone ICs. The value is ignored for other OBDLink devices. | 00 = normal FF = invert | 00 (normal) | R |
| 13 | Auto search time delay between protocols 1 & 2 setting = value × 4.096 ms | 00 to FF | F4 (999 ms) | I |
| 15 | ISO protocols (3 to 5, and 21 to 25) maximum interbyte time for receiving messages (P ₁ max) (STIP1X default setting) setting = value × 2.2 ms | 00 to FF | 0A (22 ms) | D |
| 16 | Default ISO baud rate (ATIB default setting) | 00 = 96 FF = 10 | FF (10.4 kbps) | R |
| 17 | ISO wakeup message rate (ATSW default setting) setting = value × 20.48 ms | 00 to FF | 92 (2.99 sec) | D |
| 18 | Auto search time delay between protocols 4 & 5 setting = value × 4.096 ms | 00 to FF | 00 (no delay) | I |

| PP | Description | Values | Default | Type | | | | | | | | | | | | | | | | |
|-------------|---|---------------------|--------------------|-------------|--------------------|---|---|---|------|---|---|---|-------------|---|---|---|----------|----------|------------------|---|
| 19 | Time delay after protocol 5 attempt during an automatic search, but only if protocols 3 and 4 have not yet been tried setting = value × 20.48 ms | 00 to FF | 28 (819 ms) | I | | | | | | | | | | | | | | | | |
| 1A | Protocol 5 (KWP) fast init active time (TiniL) setting = value × 2.5 ms | 00 to FF | 0A (25 ms) | D | | | | | | | | | | | | | | | | |
| 1B | Protocol 5 (KWP) fast init passive time (TiniH) setting = value × 2.5 ms | 00 to FF | 0A (25 ms) | D | | | | | | | | | | | | | | | | |
| 21 | CAN silent monitoring (ATCSM default setting) | FF = ON 00 = OFF | FF (ON) | R | | | | | | | | | | | | | | | | |
| 24 | CAN auto formatting (ATCAF default setting) | 00 = ON FF = OFF | 00 (ON) | D | | | | | | | | | | | | | | | | |
| 25 | CAN auto flow control (ATCFC default setting) | 00 = ON FF = OFF | 00 (ON) | D | | | | | | | | | | | | | | | | |
| 26 | CAN filler byte (used to pad out messages) | 00 to FF | 00 | D | | | | | | | | | | | | | | | | |
| 29 | Printing of CAN data length (DLC) when printing header bytes (ATD0/1 default setting) | 00 = ON FF = OFF | FF (OFF) | D | | | | | | | | | | | | | | | | |
| 2A | CAN error checking (protocols 6 to C) bit7: ISO 15765 data length 0: accept any 1: must be 8 bytes bit6: ISO 15765 PCI = 0 0: allowed 1: not allowed bit5 – bit3: not applicable, leave set to 0 Processing 7F xx 78's: bit2: Enabled (CAN & KWP) 0: no 1: yes bit1: Valid Modes (xx values) 0: all 1: only 00 to 0F bit0: Valid CAN protocols 0: all 1: only ISO15765 | 00 to FF | 04 (00000100) | D | | | | | | | | | | | | | | | | |
| 2B | Protocol A (SAE 1939) CAN baud rate divisor setting = 500,000 ÷ value | 01 to 20 | 02 (250 kbps) | R | | | | | | | | | | | | | | | | |
| 2C | Protocol B (USER1) CAN options. bit7: Transmit ID length 0: 29 bits 1: 11 bits bit6: Data length (DLC) 0: 8 bytes 1: variable bit5: Receive ID length 0: as set by bit7 1: both 11 and 29 bit bit4: not implemented, leave set to 0 bit3: reserved, leave set to 0 bit2 – bit0: Data format <table style="margin-left: 20px; border-collapse: collapse;"> <tr> <td style="padding-right: 5px;">bit2</td> <td style="padding-right: 5px;">bit1</td> <td style="padding-right: 5px;">bit0</td> <td style="padding-left: 10px;">Data Format</td> </tr> <tr> <td>0</td> <td>0</td> <td>0</td> <td>none</td> </tr> <tr> <td>0</td> <td>0</td> <td>1</td> <td>ISO 15765-4</td> </tr> <tr> <td>0</td> <td>1</td> <td>0</td> <td>SAE 1939</td> </tr> </table> Other bit combinations are reserved | bit2 | bit1 | bit0 | Data Format | 0 | 0 | 0 | none | 0 | 0 | 1 | ISO 15765-4 | 0 | 1 | 0 | SAE 1939 | 00 to FF | E0 (11100000) | R |
| bit2 | bit1 | bit0 | Data Format | | | | | | | | | | | | | | | | | |
| 0 | 0 | 0 | none | | | | | | | | | | | | | | | | | |
| 0 | 0 | 1 | ISO 15765-4 | | | | | | | | | | | | | | | | | |
| 0 | 1 | 0 | SAE 1939 | | | | | | | | | | | | | | | | | |
| 2D | Protocol B (USER1) baud rate divisor setting = 500,000 ÷ value | 01 to 20 | 04 (125 kbps) | R | | | | | | | | | | | | | | | | |
| 2E | Protocol C (USER2) CAN options. See PP 2C for a description. | 00 to FF | 80 (10000000) | R | | | | | | | | | | | | | | | | |
| 2F | Protocol C (USER2) baud rate divisor setting = 500,000 ÷ value | 01 to 20 | 0A (50 kbps) | R | | | | | | | | | | | | | | | | |

8.0 ST Commands

ST commands are designed to provide extended functionality, without breaking compatibility with the ELM327 AT command set. Like the AT commands, they are used to configure the OBDLink or carry out some action (e.g., set message filters or go to sleep). Both command sets are available simultaneously.

Subsection 8.1 provides a summary of all available ST commands. Subsequent subsections describe the commands in detail.

8.1 ST Command Summary

ST commands in this section are grouped by function, for quick reference. Asterisk (*) next to a setting means it's the default value.

Table 11 – General ST Commands

| Command | Description |
|------------------|---------------------------------|
| STCALSTAT | Read voltage calibration status |
| STRSTNVM | Reset NVM to factory defaults |
| STSAVCAL | Save all calibration values |
| STUIL <i>0 1</i> | Disable/Enable* LEDs |

Table 12 – UART Specific ST Commands

| Command | Description |
|------------------|--|
| STBR <i>baud</i> | Switch UART baud rate in software-friendly way |
| STBRT <i>ms</i> | Set UART baud rate switch timeout |
| STSB <i>baud</i> | Switch UART baud rate in terminal-friendly way |
| STUFC <i>0 1</i> | Set UART flow control mode off/on* |
| STWBR | Write current UART baud rate to NVM |

Table 13 – Device ID ST Commands

| Command | Description |
|---------------------|--|
| STDI | Print device hardware ID string (e.g., "OBDLink r1.7") |
| STDICES | Print engine start count |
| STDICPO | Print POR (Power on Reset) count |
| STDITPO | Print POR timer |
| STI | Print firmware ID string (e.g., "STN1100 v1.2.3") |
| STIX | Print extended firmware ID string |
| STMFR | Print device manufacturer ID string |
| STSATI <i>ascii</i> | Set ATI device ID string |
| STSDI <i>ascii</i> | Set device hardware ID string |
| STSN | Print device serial number |
| STS@1 <i>ascii</i> | Set AT@1 device description string |

Table 14 – Voltage Reading ST Commands

| Command | Description |
|---|-------------------------------|
| STVCAL [<i>volts</i> [, <i>offset</i>]] | Calibrate voltage measurement |
| STVR [<i>precision</i>] | Read voltage in volts |
| STVRX | Read voltage in ADC steps |

Table 15 – OBD Protocol ST Commands

| Command | Description |
|--|--|
| STP <i>p</i> | Set current protocol |
| STPBR <i>baud</i> | Set current OBD protocol baud rate |
| STPBRR | Report actual OBD protocol baud rate |
| STPC | Close current protocol |
| STPCB <i>0 1</i> | Turn automatic check byte calculation and checking off/on* |
| STPO | Open current protocol |
| STPR | Report current protocol number |
| STPRS | Report current protocol string |
| STPTO <i>ms</i> | Set OBD request timeout |
| STPTOT <i>ms</i> | Set message transmission timeout |
| STPTRQ <i>ms</i> | Set minimum time between last response and next request |
| STPX <i>param1</i> [, <i>param2</i> , ...] | Send arbitrary message |

Table 16 – ISO Specific ST Commands

| Command | Description |
|------------------------------|--|
| STIAT <i>0 1</i> | Turn adaptive maximum interbyte timing (P ₁ max) off/on* |
| STIFI <i>ms, ms, message</i> | Perform custom ISO fast initialization |
| STIP1X <i>ms</i> | Set maximum interbyte time for receiving messages (P ₁ max) |
| STIP4 <i>ms</i> | Set interbyte time for transmitting messages (P ₄) |

Table 17 – CAN Specific ST Commands

| Command | Description |
|---------------------------------------|--|
| STCAF <i>format</i> [, <i>tt</i>] | Set CAN addressing format |
| STCFCPA <i>txadd[ext], rxadd[ext]</i> | Add flow control address pair |
| STCFCPC | Clear all flow control address pairs |
| STCMM <i>mode</i> | Set CAN monitoring mode |
| STCSEGR <i>0 1</i> | Turn CAN Rx segmentation off*/on |
| STCSEGT <i>0 1</i> | Turn CAN Tx segmentation off*/on |
| STCSTM <i>ms</i> | Set delay offset for STmin |
| STCSWM <i>mode</i> | Set Single Wire CAN transceiver mode |
| STCTOR <i>fcTimeout, cfTimeout</i> | Set CAN FC and CF Rx timeouts |
| STCTR <i>hhhhh</i> | Set CAN timing configuration registers |
| STCTRR | Read CAN timing configuration |

OBDLink Family

Table 18 – Monitoring ST Commands

| Command | Description |
|---------|---------------------------------------|
| STM | Monitor OBD bus using current filters |
| STMA | Monitor all messages on OBD bus |

Table 19 – Filtering ST Commands

| Command | Description |
|---|------------------------------------|
| STFA | Enable automatic filtering |
| STFAC | Clear all filters |
| STFBA <i>[pattern]</i> , <i>[mask]</i> | Add block filter |
| STFBC | Clear all block filters |
| STFFCA <i>[pattern]</i> , <i>[mask]</i> | Add CAN flow control filter |
| STFFCC | Clear all CAN flow control filters |
| STFPA <i>[pattern]</i> , <i>[mask]</i> | Add pass filter |
| STFPC | Clear all pass filters |
| STFPGA <i>pgn</i> [, <i>tgt address</i>] | Add SAE J1939 PGN filter |
| STFPGC | Clear all SAE J1939 PGN filters |

Table 20 – PowerSave ST Commands

| Command | Description |
|---|--|
| STSLCS | Print active PowerSave configuration summary |
| STSLEEP <i>[delay]</i> | Enter sleep mode with optional delay |
| STSLLT | Report last sleep/wakeup triggers |
| STSLPCP <i>0 1</i> | Set PWR_CTRL output polarity |
| STSLU <i>sleep, wakeup</i> | UART sleep/wakeup triggers on/off |
| STSLUIT <i>sec</i> | Set UART inactivity timeout |
| STSLUWP <i>min, max</i> | Set UART wakeup pulse timing |
| STSLVG <i>on off</i> | Voltage change wakeup trigger on/off |
| STSLVGW <i>[+ -]volts, ms</i> | Set configuration of the voltage change wakeup trigger |
| STSLVL <i>sleep, wakeup</i> | Voltage level sleep/wakeup triggers on/off |
| STSLVLS <i>< > volts 0xhhh, sec</i> | Set configuration of the voltage level sleep trigger |
| STSLVLW <i>< > volts 0xhhh, sec</i> | Set configuration of the voltage level wakeup trigger |
| STSLX <i>sleep, wakeup</i> | External sleep trigger on/off |
| STSLXP <i>0 1</i> | Set polarity of the external sleep control input |
| STSLXS | Print external SLEEP input status |
| STSLXST <i>ms</i> | Set minimum active time for external sleep trigger before entering sleep |
| STSLXWT <i>ms</i> | Set minimum inactive time for external sleep trigger before wakeup |

Table 21 – Bluetooth Commands

| Command | Description |
|-----------------------|--|
| STBTCOD <i>hhhhhh</i> | Set Bluetooth modem CoD |
| STBTDN <i>ascii</i> | Set Bluetooth broadcasting device name |

Table 22 – General Purpose I/O ST Commands

| Command | Description |
|---|----------------------------------|
| STGPC <i>pin1:options</i> [, ..., <i>pinN:options</i>] | Configure I/O pins |
| STGPIR <i>pin1</i> [, ..., <i>pinN</i>] | Read inputs |
| STGPIRH <i>pin1</i> [, ..., <i>pinN</i>] | Read inputs, report value as hex |
| STGPOR <i>pin1</i> [, ..., <i>pinN</i>] | Read output latches |
| STGPOW <i>pin1:state</i> [, ..., <i>pinN:state</i>] | Write output latches |

Table 23 – Periodic Messaging ST Commands

| Command | Description |
|------------------------------------|-----------------------------|
| STPPMA <i>period, header, data</i> | Add a periodic message |
| STPPMC | Clear all periodic messages |
| STPPMD <i>handle</i> | Delete a periodic message |

Table 24 – Deprecated ST Commands

| Command | Description | Replaced with |
|---------|--|---|
| STCAFCP | Add CAN flow control address pair | STCFCPA <i>txadd[ext]</i> , <i>rxadd[ext]</i> |
| STCCFCP | Clear all CAN flow control address pairs | STCFPCP |
| STFAB | Add block filter | STFBA [<i>pattern</i>], [<i>mask</i>] |
| STFAFC | Add CAN flow control filter | STFFCA [<i>pattern</i>], [<i>mask</i>] |
| STFAP | Add pass filter | STFPA [<i>pattern</i>], [<i>mask</i>] |
| STFAPG | Add SAE J1939 PGN filter | STFPGA <i>pgn</i> [, <i>tgt address</i>] |
| STFCA | Clear all filters | STFAC |
| STFCB | Clear all block filters | STFBC |
| STFCFC | Clear all CAN flow control filters | STFFCC |
| STFCP | Clear all pass filters | STFPC |
| STFCPG | Clear all SAE J1939 PGN filters | STFPGC |
| STIBR | Set ISO baud rate | STPBR <i>baud</i> |
| STIMCS | Turn ISO manual checksum off/on | STPCB 0 1 |
| STPRBR | Report actual OBD protocol baud rate | STPBRR |

8.2 General ST Commands

STCALSTAT

Read the saved device voltage calibration status (set by STVCAL). Will print one of three options:

ANALOG IN: SAVED

Returned if STVCAL and STSAVCAL have both been run.

ANALOG IN: NOT READY

Returned if STVCAL has not been run yet.

ANALOG IN: READY

Returned if STVCAL has been run but STSAVCAL has not.

STRSTNVM

Reset all settings saved in the non-volatile memory (NVM) to the factory defaults. This includes all programmable parameters, saved OBD protocol, UART baud rate, voltage calibration, ATI device ID string, AT@1 device description string, and all PowerSave configuration parameters. One-time

programmable values (AT@3, STSDI, STSAVCAL) and the user data byte (ATSD) will *not* be reset.

STSAVCAL

Save all calibration values as factory defaults. The values are saved in one-time programmable memory; therefore, this operation can be performed only once. The following values are saved:

- **Voltage calibration** (set using ATCV or STVCAL)
- **Voltage offset** (set using STVOFS)

Returns '?' if any of the calibration values have not been set, or if the STSAVCAL has already been used to successfully save the calibration values.

Note: This command is only available for stand-alone ICs and the microOBD 200 module (STN1120).

STUIL 0|1

Disable or enable LEDs. This setting is written to volatile memory and will not survive a power cycle.

Default is 1 (LEDs enabled).

8.3 UART Specific ST Commands

STBR *baud*

Switch UART baud rate in software-friendly way. The STBR command operates the same as the ATBRD command, with the following differences:

- Baud rate is specified as a decimal number in baud
- Returns '?' if the specified baud rate cannot be generated with 3% or better accuracy
- The ID string returned is the STI string

Examples:

STBR 300 *switch baud rate to 300 bps*
STBR 115200 *switch baud rate to 115.2 kbps*
STBR 2000000 *switch baud rate to 2 Mbps*

STBRT *ms*

Set UART baud rate switch timeout for ATBRD *divisor* and STBR *baud* commands. The STBRT *ms* command sets the same timeout as the ATBRT *timeout* command, except that the timeout is specified as a decimal value in milliseconds and the maximum timeout is 65535 ms (65.5 seconds).

STSBR baud

Switch UART baud rate in a terminal emulator-friendly way. The STSBR command is designed to simplify UART baud rate switching when communicating with an OBDLink device “by hand”, using a terminal emulator program. The baud rate is specified as a decimal number in baud (38 to 10000000). Returns ‘?’ if the specified baud rate cannot be generated with 3% or better accuracy.

The command will print “OK” at the old baud rate, wait the time set by the STBRT *ms* or ATBRT *timeout* command, then switch to the new baud rate. The command prompt will be printed at the new baud rate, but in most cases will not be visible in the terminal, since there will not be enough time to switch the terminal to the new baud rate.

The new baud rate will persist until the device is reset or power cycled. Use the STWBR command to save the new baud rate in non-volatile memory.

Use the following sequence to switch an STN1100 device to 921.6 kbps using a serial terminal:

1. Issue STSBR 921600 command
2. Look for “OK” response to make sure the baud rate is supported. The command prompt will be printed at the new baud rate and will not be visible.
3. Switch the terminal to 921.6 kbps
4. Issue STI command to confirm successful switch to the new baud rate.
5. Optionally, issue STWBR command to make the new baud rate persist after device reset or power cycle.

STUFC 0|1

Set UART flow control mode. 0 will turn off flow control, 1 will set flow control to use RTS/CTS. Default is 1.

This command is available for stand-alone STN ICs only, i.e. 1110, 1170, 2100, and 2120.

STWBR

Write current UART baud rate to the non-volatile memory (NVM). This command will save the current baud rate regardless of how the device was switched to this baud rate (ATBRD, STBR, or STSBR commands).

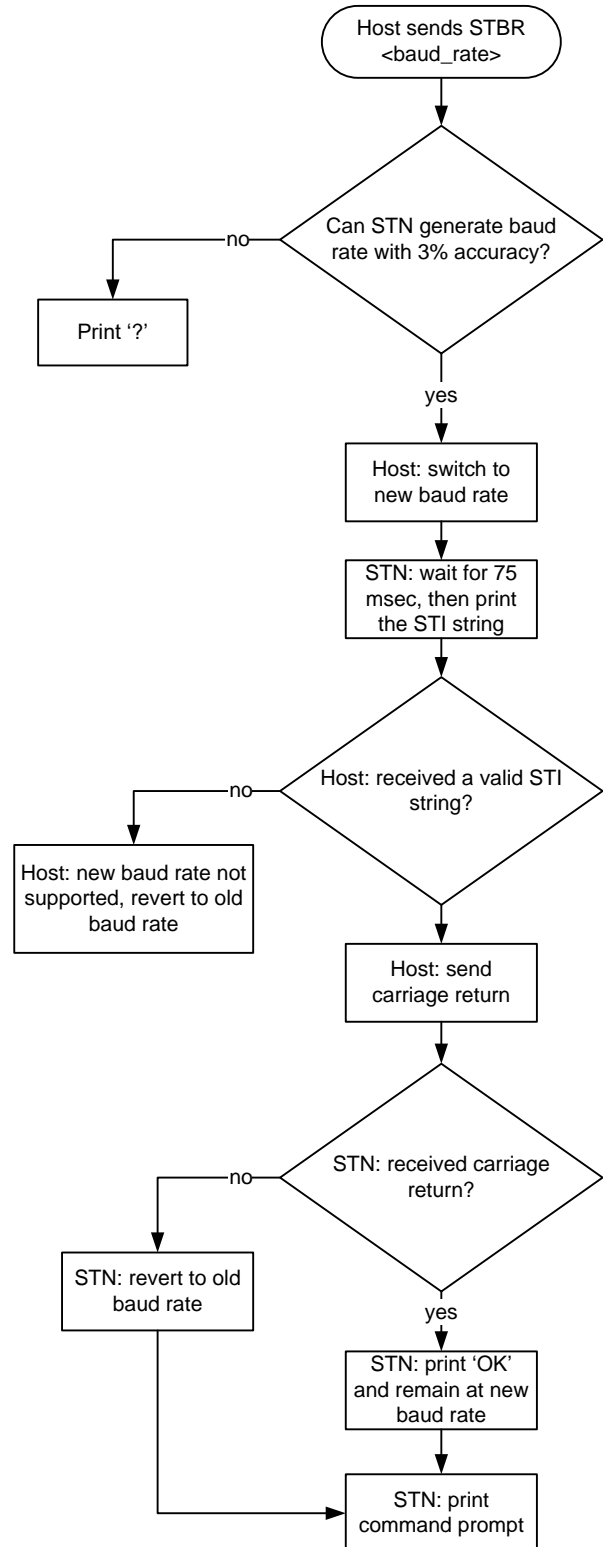


Figure 1 – STBR Algorithm

8.4 Device ID ST Commands

OBDLink supports a number of commands which can be used to identify the device, get its unique serial number, and print the firmware and hardware versions.

STDI

Print device hardware ID string, in this format:

<device_name> rX.Y

X.Y is the device hardware revision number.

Example: OBDLink r1.7

STDICES

Print the engine start count.

STDICPO

Print the POR (Power on Reset) count. This count will increment whenever the device is power cycled, and with firmware updates.

STDITPO

Print the POR timer, which is the amount of time, in seconds, the device has run since the last power cycle.

STI

Prints firmware ID string, in this format:

STN<device_id> vX.Y.Z

X.Y.Z is the firmware version number.

Example: STN1101 v1.1.0

STIX

Print the extended firmware ID string. Same as STI, except this command also prints the firmware designator information (if it exists) and the firmware release date.

Example: STN1151 v4.5.0 [2019.04.12]

STMFR

Print the device manufacturer ID string. If not programmed at the factory for a specific OEM, on STN1110, STN1170, STN2100, and STN2120, this command returns "Generic".

STSATI *ascii*

Set ATI ID string. Accepts printable ASCII characters (0x20 to 0x7E). Maximum length is 31 characters. Leading and trailing spaces will be ignored.

STSDI *ascii*

Set device hardware ID string. This command allows one-time reprogramming of the device ID string, which is returned by the STDI command. The complete ID string must be supplied, including any hardware revision designations. Accepts printable ASCII characters (0x20 to 0x7E). Maximum length is 47 characters. Leading and trailing spaces will be ignored.

Example: STSDI OBD Gizmo r1.0

Note: This command is available only for stand-alone ICs. This is a one-time user-programmable value.

The following table lists devices default values.

| Device ID | Device Name |
|-----------|-------------|
| STN1110 | STN1110 |
| STN1170 | STN1170 |
| STN2100 | STN2100 |
| STN2120 | STN2120 |

STSN

Print the device serial number. The serial number is programmed at the factory and cannot be changed. Serial numbers for all devices are 12 digits long, and begin with the device ID, making each serial number unique across all OBDLink devices:

<device_id><serial_number>

Example: 110012345678

STS@1 *ascii*

Set the device description string returned by AT@1 command. Accepts printable ASCII characters (0x20 to 0x7E). Maximum length is 47 characters. Leading and trailing spaces will be ignored.

8.5 Voltage ST Commands

STVCAL [volts [, offset]]

Calibrate voltage measurement. The voltage returned by ATRV and STVR commands can be calibrated using this command. Takes current voltage with a maximum value of 65.534, and a maximum precision of three decimal places. The optional *offset* parameter specifies voltage offset. Some devices have the ANALOG_IN input connected to the measured voltage with a constant voltage offset (e.g.: a series diode).

When no parameters are specified, the voltage calibration is set to factory defaults.

Example: STVCAL 12.345, 0.67

Note: The offset parameter is available only for stand-alone ICs, and microOBD 200 (STN1120).

STVR [precision]

Read voltage in volts. Returns calibrated voltage measured by the ANALOG_IN pin. The optional *precision* parameter specifies precision in digits after decimal point (0 to 3). Default precision is two decimal points.

Example: 12.34

When the calibrated voltage exceeds 65.534V, digits are replaced by dashes.

Example: --.--

STVRX

Read voltage in ADC steps. Returns the voltage on ANALOG_IN pin in ADC counts. The range is 0x000 (AVSS) to 0xFFFF (AVDD).

Example: 0x567

8.6 OBD Protocol ST Commands

STP p

Set current protocol preset. This command selects the physical transceiver to be used for communication, and sets the attributes such as header size, baud rate, etc.

Note that this command does not actually open the communication channel. This can be done explicitly with the STPO command, or by sending an OBD request.

Baud rate can be changed using the STPBR command (currently not supported by J1850 protocols). Automatic checksum can be turned off using the STPCB command for all protocols except CAN.

Note that presets without autoinit do not send automatic keep-alive messages.

OBDLink ICs support a maximum of three physical CAN channels: High Speed CAN, Medium Speed CAN, and Single Wire CAN. Internally, the OBDLink has only one CAN peripheral that can be mapped to different IC pins under software control. This means that only one CAN channel can be active at a time.

High Speed CAN (HS-CAN) is a dual-wire CAN transceiver connected to OBD port pins 6 and 14. Most newer (2008+) vehicles use it for legislated diagnostics. Older vehicles often use it for inter-ECU communication and enhanced manufacturer-specific diagnostics.

| SAE J1850 | |
|-----------|---------------|
| p | Protocol |
| 11 | SAE J1850 PWM |
| 12 | SAE J1850 VPW |

| ISO 9141 and ISO 14230-4 (KWP2000) | |
|------------------------------------|-----------------------------------|
| p | Protocol |
| 21 | ISO 9141 (no header, no autoinit) |
| 22 | ISO 9141-2 (5 baud autoinit) |
| 23 | ISO 14230-4 (no autoinit) |
| 24 | ISO 14230-4 (5 baud autoinit) |
| 25 | ISO 14230-4 (fast autoinit) |

| High Speed CAN | |
|----------------|--|
| p | Protocol |
| 31 | ISO 11898, 11-bit Tx, 500kbps, var DLC |
| 32 | ISO 11898, 29-bit Tx, 500kbps, var DLC |
| 33 | ISO 15765, 11-bit Tx, 500kbps, DLC=8 |
| 34 | ISO 15765, 29-bit Tx, 500kbps, DLC=8 |
| 35 | ISO 15765, 11-bit Tx, 250kbps, DLC=8 |
| 36 | ISO 15765, 29-bit Tx, 250kbps, DLC=8 |
| 41 | J1939 (11-bit Tx) |
| 42 | J1939 (29-bit Tx) |

OBDLink Family

Medium Speed CAN (MS-CAN) is a dual-wire transceiver typically connected to pins 3 and 11 of the OBD port (Ford MSC network).

| Medium Speed CAN | |
|------------------|--|
| p | Protocol |
| 51 | ISO 11898, 11-bit Tx, 125kbps, var DLC |
| 52 | ISO 11898, 29-bit Tx, 125kbps, var DLC |
| 53 | ISO 15765, 11-bit Tx, 125kbps, DLC=8 |
| 54 | ISO 15765, 29-bit Tx, 125kbps, DLC=8 |

Single Wire CAN (SW-CAN), also known as “GMLAN”, is a single-wire transceiver connected to OBD port pin 1.

| Single Wire CAN | |
|-----------------|---|
| p | Protocol |
| 61 | ISO 11898, 11-bit Tx, 33.3kbps, var DLC |
| 62 | ISO 11898, 29-bit Tx, 33.3kbps, var DLC |
| 63 | ISO 15765, 11-bit Tx, 33.3kbps, DLC=8 |
| 64 | ISO 15765, 29-bit Tx, 33.3kbps, DLC=8 |

SW-CAN has additional settings controlled by the STCSWM command.

Currently, for a given CAN preset, the protocol (ISO 11898, ISO 15765, J1939) and Tx ID size (11/29 bit) are hard-set. Baud rate and DLC can be changed using AT/ST commands. All CAN presets are configured to receive both 11-bit and 29-bit messages.

STPBR *baud*

Set current OBD protocol baud rate. Takes bit rate in bps as a decimal number. Currently, only the ISO and CAN protocols allow baud rate switching. The command will round the specified baud rate to the closest value that can be generated. When values outside the minimum/maximum possible baud rates are specified, they will be set to the corresponding minimum/maximum value. Use the STPBRR command to check the actual protocol baud rate.

STPBRR

Report actual OBD protocol baud rate. Returns current protocol bit rate in bps rounded to the nearest integer value. Returns ‘?’ if the protocol is AUTO. The actual baud rate will be reported whether the baud rate is variable or not.

STPC

Close current protocol.

STPCB *0|1*

Turn automatic check byte calculation and checking off/on. When this setting is off, OBDLink will not automatically append checksum byte for transmitted messages or verify checksum for received messages. This command does not apply to CAN protocols, where CRC is always on. Additionally, when checksum is off for ISO 14230 (KWP2000) protocols, minimum allowed OBD request length is increased to 2 bytes (one data byte and checksum). Default is 1.

STPO

Open current protocol.

STPR

Report current protocol number.

STPRS

Report current protocol string.

STPTO *ms*

Set OBD request timeout. Takes a decimal parameter in milliseconds (1 to 65535). 0: timeout is infinite. The default setting is controlled by PP 03.

Default is 102 ms.

STPTOT *ms*

Set the message transmission timeout. This is the time the device will wait for bus access, before printing “BUS BUSY”. Takes a decimal parameter in milliseconds (1 to 65535). The default values for each protocol are:

| Protocol | Default Timeout, ms |
|------------------------|---------------------|
| SAE J1850 PWM/VPW | 300 |
| ISO 9141-2/ISO 14230-4 | 300 |
| ISO 15765-4 (CAN) | 50 |

STPTRQ *ms*

Set the minimum time between the last response and the next request. Takes a decimal parameter in milliseconds (1 to 65535). For ISO 9141-2 and ISO 14230-4 protocols, this is the P_3 timing.

The default for ISO 9141-2 and ISO 14230-4 is 56. For all others, it is 0.

STPX param1 [, param2, ...]

Transmit arbitrary message on OBD bus. Takes a variable list of parameters, separated by commas. Each parameter is prefixed with a single-character parameter identifier, followed by parameter value, delimited by a colon character. This command will turn on segmentation but will revert segmentation back to its previous state (on or off) after sending the message.

'd' (data) or 'l' (data length) are the only required parameters. If a parameter is omitted, default settings are used.

| Param | Description |
|-------|--|
| h | Header / CAN ID. If omitted, value, set by ATSH command is used. |
| d | Data. If specified, [data length] parameter is not allowed. |
| l | Data length. If specified, [data] parameter is not allowed. Instead, after the command is issued, user is prompted for data. |
| t | Response timeout. If specified, overrides value, set by STPTO command. ATAT setting is still obeyed. |
| r | Expected response count. Overrides ATR command setting. |
| x | Extra data (protocol dependent): ISO 15765: extended address (overrides value, set by ATCEA command) ISO 9141: expected response length in bytes |
| f | Flags (binary-encoded hex) b0 – auto checksum flag enabled b16 – auto checksum (0: on, 1: off) |

When 'l' (data length) parameter is specified, once the command is issued, OBDLink sends DATA> prompt over UART. At which time, user must send message data bytes as ASCII HEX characters. If there's not enough memory for the data length specified, the command will return OUT OF MEMORY error, instead of the DATA> prompt. This mode is used to send messages longer than the UART receive buffer will allow. The table below shows the maximum message size by device.

| Device | Max message size | Max Recommended Baudrate |
|----------------------------------|------------------|--------------------------|
| OBDLink MX+ | 4k | N/A |
| OBDLink EX STN2100 STN2120 | 4k | 2 Mbps |
| OBDLink LX OBDLink MX | 2k | N/A |
| OBDLink SX STN1110 STN1170 | 2k | 2 Mbps ⁽¹⁾ |

Note 1. With character echo off (ATE 0), 1 Mbps with character echo on (ATE 1).

Examples:

STPX h:686AF1, d:0100, t:50, r:1

STPX h:686AF1, l:2, t:50, r:1
DATA>0100

STPX d:0100

STPX h:123456, d:

8.7 ISO Specific ST Commands

STIAT 0|1

Turn ISO adaptive P₁ max timing off/on. When this mode is on, maximum interbyte time (P₁ max) for ISO 9141 messages is adaptively reduced to allow communication with some ECUs that do not comply with the minimum inter-message time (P₂ min) specified in ISO 9141-2 standard.

Default is 1.

STIFI ms, ms, message

Perform custom ISO fast initialization. The first parameter is the initialization sequence LOW time (in milliseconds), the second parameter is the HIGH time (in milliseconds), and the third parameter is a hex string for the init message.

Default is 25, 25, C133F18166.

Note: Init message must include the header and checkbytes.

Example:

STIFI 25, 25, C133F18166

OBDLink Family

STIP1X ms

Set maximum interbyte time for receiving ISO messages (P₁ max). Takes a decimal parameter in milliseconds. Maximum is 65535 ms (65.5 seconds).

Default is 20 ms.

STIP4 ms

Set interbyte time for transmitting ISO messages (P₄). Takes a decimal parameter in milliseconds. Maximum is 65535 ms (65.5 seconds).

Default is 5 ms.

8.8 CAN Specific ST Commands

STCAF *format* [, *tt*]

Set CAN addressing format. The *tt* parameter specifies target address extension and is required for formats 1 and 2. This command will use the default flow control “address” pairs, listed in Section 12.0, “ISO 15765 Message Reception”. Additional pairs may be added with the STCFCPA command.

The default addressing format for all CAN protocols is 0 (Normal).

Please see Section 13.0, “CAN Addressing Formats”.

| Format | Description |
|--------|-------------------------------------|
| 0 | Normal |
| 1 | Extended with target address |
| 2 | Mixed with target address extension |

Examples:

```
STCAF 0
STCAF 1, F2
```

STCFCPA *txadd[ext]*, *rxadd[ext]*

Add a flow control CAN address pair. Takes two three-digit or eight-digit parameters: *txid* is transmitter ID (i.e. ID transmitted by the OBDLink), and *rxid* is receiver ID (i.e. ID transmitted by the ECU).

Optionally takes two five-digit or ten-digit parameters.

Examples:

```
STCFCPA 7E0, 7E8
STCFCPA 18DA10F1, 18DAF110
STCFCPA 7E0 F2, 7E8 A2
STCFCPA 18DA10F1 F2, 18DAF110 A2
```

STCFPCP

Clear all flow control address pairs.

STCMM *mode*

Set CAN monitoring mode. This command affects the operation of OBDLink in monitoring mode (STMA, STM, etc.). The parameter specifies whether OBDLink should acknowledge received frames (this may be necessary, for example, if OBDLink is one of only two nodes on the bus) or remains silent. The default setting is controlled by PP 21. The factory default is 0 (silent monitoring, no ACKs).

Mode can be one of the following:

| Mode | Description |
|------|---|
| 0 | Receive only – no CAN ACKs (default) |
| 1 | Normal node – with CAN ACKs |
| 2 | Receive all frames, including frames with errors – no CAN ACKs. |

Note about STCMM 2: if an error occurs before the DLC field is received, the OBDLink will re-print the previous frame.

STCSEGR *0|1*

Disable or enable CAN segmentation for received multi-frame messages. Automatically removes multi-frame PCI bytes and assembles the data into a single message.

Default is 0 (CAN segmentation disabled).

STCSEGT *0|1*

Disable or enable CAN segmentation for transmitted multi-frame messages. Automatically splits the message into frames and adds multi-frame PCI bytes.

Default is 0 (CAN segmentation disabled).

STCSTM *ms*

Set additional time for ISO 15765-2 minimum Separation Time (STmin) during multi-frame message transmission. This time will be added to the STmin separation time, specified in the flow control frames, sent by ECUs. The combined values have a maximum of 127 milliseconds. Timeout can be set in sub-milliseconds, with at most 3 decimal places.

Examples:

```
STCSTM 2
STCSTM 0.075
```

STCSWM *mode*

Set Single Wire CAN transceiver mode. SW CAN mode is set to Normal when a SW CAN protocol is opened and is automatically set to Sleep when the protocol is closed. When SW protocol is selected, transceiver mode can be switched to the specified mode. Mode parameter is a bit-encoded 3-bit number (0 to 8) that controls the three single-wire CAN transceiver control pins:

| Bit 2 | Bit 1 | Bit 0 |
|-------|-------|-------|
| LOAD | MODE1 | MODE0 |

OBDLink Family

The following modes are commonly used:

| Mode | Description |
|------|----------------------------------|
| 0 | Sleep |
| 1 | High Speed – High Speed Load Off |
| 2 | High Voltage Wakeup |
| 3 | Normal (default) |
| 5 | High Speed – High Speed Load On |

STCTOR *fcTimeout, cfTimeout*

Set receive timeout for ISO 15765-2 Flow Control (FC) and Consecutive (CF) frames. Flow Control frames are received during CAN multi-frame message transmission. Consecutive frames are received during

multi-frame message reception. Timeouts are specified in milliseconds.

Defaults:
fcTimeout = 75 ms
cfTimeout = 150 ms

STCTR *hhhhh*

Set the CAN timing configuration registers. The input is the 6-digit hex value that will be written to the registers. This command can be used for custom timing on the CAN module.

STCTRR

Print the CAN timing configuration registers (set by STCTR *hhhhh*).

8.9 Monitoring ST Commands

OBDLink devices feature both filtered and unfiltered monitoring. To stop monitoring, send any single character or carriage return and wait for the command prompt.

STM

Monitor OBD bus using current filters.

STMA

Monitor all messages on OBD bus. For CAN protocols, all messages will be treated as ISO 15765. To monitor raw CAN messages, use the STM command.

8.10 Filtering ST Commands

OBDLink devices feature a sophisticated filtering system that can be precisely fine-tuned to isolate only the messages of interest, reducing the load on the host software and making it possible to use lower baud rates. For a detailed overview, see Section 11.0, “OBD Message Filtering”

A special note of caution: each of the “add filter” commands (STFBA, STFFCA, STFPA, and STFFGA) dynamically allocates a block of RAM to store the filter. Since RAM is finite, it is possible to add too many filters. If not enough memory is available to add the filter, the command will return the OUT OF MEMORY error. If this occurs, OBD requests may also start generating OUT OF MEMORY errors because the OBD message memory buffer is located in the same RAM.

The maximum number of filters that can be added depends on a number of factors and may change slightly between firmware revisions even for the same scenario. For example, the memory allocation scheme may be optimized, or new functionality is added. To minimize the impact of these changes on your software, make sure that your code anticipates and gracefully handles OUT OF MEMORY errors.

STFA

Enable automatic filtering.

STFBC

Clear all block filters.

STFAC

Clear all filters.

STFFCA [*pattern*], [*mask*]

Add flow control filter. Same syntax as STFPA.

STFBA [*pattern*], [*mask*]

Add block filter. Same syntax as STFPA.

STFFCC

Clear all flow control filters.

STFPA [*pattern*], [*mask*]

Add a pass filter. Takes two parameters: pattern and mask. Pattern and mask can be any length from 0 to 5 bytes (0 to 10 ASCII characters), but both have to be the same length. The messages are matched MSB first, up to the filter length. Messages shorter than the filter length, will not match that filter.

If an odd number of ASCII characters is specified, a leading 0 will be added to the first byte. In other words,

```
STFPA 7E8,7FF
...is the same as
STFPA 07E8,07FF
```

For 29-bit CAN, the first four bytes are CAN ID; for 11-bit CAN, the first two bytes are CAN ID.

The first 3 bits for 29-bit CAN or the first 5 bits for 11-bit CAN should be don't care (0s in mask) and/or 0s in pattern.

STFPC

Clear all pass filters.

STFPGA *pgn* [, *tgt address*]

Add SAE J1939 PGN filter. PGN is specified as a hexadecimal number 4 to 6 digits in length. If the specified PGN is shorter than 6 digits, leading 0s will be prepended. For PGNs that are longer than 4 hex characters, only the Data Page bit will be used in the extra byte; the Reserved and Priority bits are ignored.

A PGN filter is a complex pass filter that allows passing all messages that carry the specified PGN.

If the optional ***tgt address*** parameter is not specified, all messages containing the specified PGN will be included. If the target address is specified, only messages sent to that address will be included. Messages broadcast to all addresses will be included in both cases. To see only the broadcast messages, specify target address of 0xFF.

The following messages are included:

If the specified PGN is of the **PDU1** type, and target address is **not specified**: all messages, containing the specified PGN in their header. This includes:

1. All messages, containing the specified PGN in the CAN header
2. Acknowledgment messages (PGN: 59392, \$00E800), containing the specified PGN
3. Multi-segment BAM transfers
 - a. TP.CM frames (PGN: 60416, \$00EC00)
 - i. TP.CM_BAM messages
 - b. TP.DT frames (PGN: 60160, \$00EB00)
4. Multi-segment RTS/CTS transfers
 - a. TP.CM frames (PGN: 60416, \$00EC00)
 - i. TP.CM_RTS messages
 - ii. TP.Conn_Abort messages
 - b. TP.DT frames (PGN: 60160, \$00EB00)

If the specified PGN is of the **PDU1** type, and the specified target address is **0xFF**: all global broadcast messages (addressed to 0xFF), containing the specified PGN in their header. This includes:

1. Messages, containing the specified PGN in the CAN header
2. Acknowledgment messages (PGN: 59392, \$00E800), containing the specified PGN
3. Multi-segment BAM transfers
 - a. TP.CM frames (PGN: 60416, \$00EC00)
 - i. TP.CM_BAM messages
 - b. TP.DT frames (PGN: 60160, \$00EB00)

If the specified PGN is of the **PDU1** type, and the specified target address is **other than 0xFF**: all messages, containing the specified PGN in their header and addressed to the specified target address, *plus* all global broadcasts (addressed to 0xFF). This includes:

1. Messages, containing the specified PGN in the CAN header and addressed to the specified target address or 0xFF
2. Acknowledgment messages (PGN: 59392, \$00E800), containing the specified PGN
3. Multi-segment BAM transfers
 - a. TP.CM frames (PGN: 60416, \$00EC00)
 - i. TP.CM_BAM messages
 - b. TP.DT frames (PGN: 60160, \$00EB00)
4. Multi-segment RTS/CTS transfers
 - a. TP.CM frames (PGN: 60416, \$00EC00)
 - i. TP.CM_RTS messages
 - ii. TP.Conn_Abort messages
 - b. TP.DT frames (PGN: 60160, \$00EB00)

If the specified PGN is of the **PDU2** type: all messages, containing the specified PGN in their header. This includes:

1. Messages, containing the specified PGN in the CAN header
2. Acknowledgment messages (PGN: 59392, \$00E800), containing the specified PGN
3. Multi-segment BAM transfers
 - a. TP.CM frames (PGN: 60416, \$00EC00)
 - i. TP.CM_BAM messages
 - b. TP.DT frames (PGN: 60160, \$00EB00)
4. Multi-segment RTS/CTS transfers
 - a. TP.CM frames (PGN: 60416, \$00EC00)
 - i. TP.CM_RTS messages
 - ii. TP.Conn_Abort messages
 - b. TP.DT frames (PGN: 60160, \$00EB00)

For multi-frame PGNs, OBDLink provides internal session management, including timeouts and sending

OBDLink Family

of TP.CM_CTS, TP.CM_EndOfMsgACK, and TP.Conn_Abort messages, when not in monitoring mode. In monitoring mode, passive session management is used to follow TP.CM_BAM multi-segment messages and TP.CM_RTS multi-segment messages, requested by other nodes.

Only first-level encapsulated PGNs will be passed by this PGN filter. Specifically, PGNs returned via the Transfer messages (PGN: 51712, 0x00CA00) will not be filtered for. In order to filter for PGNs returned via the Transfer PGN, add a PGN filter for the 0x00CA00

PGN and then look for the enclosed PGN in the first three bytes of the Transfer PGN data.

This command is only available when an SAE J1939 protocol is selected.

Examples:

```
STFPGA 00FECB
STFPGA FECB, F9
```

STFPGC

Clear all SAE J1939 PGN filters.

8.11 PowerSave ST Commands

For a detailed description of the OBDLink PowerSave functionality, see Section 15.0.

STSLCS

Print active PowerSave configuration summary. This command prints only the currently active configuration. Therefore, to see the native configuration settings, ELM327 control mode must be turned off by clearing the “master enable” bit of PP 0E or turning off the PP 0E parameter. The device must be reset for any PowerSave configuration changes to take effect.

The configuration is printed in the following format:

```
CTRL MODE: <NATIVE/ELM327>
PWR_CTRL: LOW PWR = <LOW/HIGH>
UART SLEEP: <ON/OFF>, <timeout> s
UART WAKE: <ON/OFF>, <pulse min>-<pulse max> us
EXT INPUT: <LOW/HIGH> = SLEEP
EXT SLEEP: <ON/OFF>, <LOW/HIGH> FOR <time> ms
EXT WAKE: <ON/OFF>, <LOW/HIGH> FOR <time> ms
VL SLEEP: <ON/OFF>, <</>>[!]<level> FOR <time> s
VL WAKE: <ON/OFF>, <</>>[!]<level> FOR <time> s
VCHG WAKE: <ON/OFF>, [+/-][!]<change> IN <time> ms
```

See Table 25 – PowerSave Configuration Summary Detail for the detailed line-by-line description of the configuration summary. The “Sec.” column contains a reference to the relevant section of this document.

Example:

```
CTRL MODE: NATIVE
PWR_CTRL: LOW PWR = LOW
UART SLEEP: OFF, 1200 s
UART WAKE: ON, 0-30000 us
EXT INPUT: LOW = SLEEP
EXT SLEEP: OFF, LOW FOR 3000 ms
EXT WAKE: ON, HIGH FOR 2000 ms
VL SLEEP: OFF, <13.00V FOR 600 s
VL WAKE: OFF, >13.20V FOR 1 s
VCHG WAKE: OFF, 0.20V IN 1000 ms
```

or

```
VL SLEEP: OFF, <0x8C1 FOR 600 s
VL WAKE: OFF, >0x8E3 FOR 1 s
VCHG WAKE: OFF, 0x022 IN 1000 ms
```

Table 25 – PowerSave Configuration Summary Detail

| Configuration Summary Line | Sec. | Description |
|--------------------------------------|--------|---|
| CTRL MODE: <NATIVE/ELM327> | 15.1 | PowerSave control mode. Reports whether PowerSave module is operating in a <i>native PowerSave</i> control mode, where all settings are configured via the ST commands, or an <i>ELM327 Low Power</i> compatibility mode, where some settings are overridden via the ELM327 programmable parameter 0E. |
| PWR_CTRL: LOW PWR = <LOW/HIGH> | 15.5 | PWR_CTRL output pin polarity. Specifies whether the pin outputs a logic <i>LOW</i> or <i>HIGH</i> in low power mode. |
| UART SLEEP: <ON/OFF>, <timeout> s | 15.2.2 | UART inactivity sleep trigger: <ON/OFF> trigger on/off <timeout> inactivity timeout setting in milliseconds |

| Configuration Summary Line | Sec. | Description |
|---|--------|--|
| UART WAKE: <ON/OFF>, <pulse min>-<pulse max> us | 15.3.1 | UART Rx pulse wakeup trigger: <ON/OFF> trigger on/off <pulse min> minimum UART Rx pulse width in microseconds <pulse max> maximum UART Rx pulse width in microseconds (0 = no maximum) |
| EXT INPUT: <LOW/HIGH> = SLEEP | 15.2.3 | SLEEP input polarity. Specifies whether it takes a <i>LOW</i> or a <i>HIGH</i> on the SLEEP pin to put the device to sleep. |
| EXT SLEEP: <ON/OFF>, <LOW/HIGH> FOR <time> ms | 15.2.3 | External SLEEP input sleep trigger: <ON/OFF> trigger on/off <LOW/HIGH> specifies the active logic level <time> specifies how long the SLEEP input must be held in the active (“sleep”) state to put the device to sleep. |
| EXT WAKE: <ON/OFF>, <LOW/HIGH> FOR <time> ms | 15.3.2 | External SLEEP input wakeup trigger: <ON/OFF> trigger on/off <LOW/HIGH> specifies the active logic level <time> specifies how long the SLEEP input must be held in the inactive (“wake”) state to wake the device from sleep. |
| VL SLEEP: <ON/OFF>, <</>>[!]<level> FOR <time> s | 15.2.4 | Voltage level sleep trigger: <ON/OFF> trigger on/off <</>> specifies whether the trigger region is below (<) or above (>) the <level> threshold setting [!] this designator indicates that the trigger voltage setting is invalid, i.e. cannot be achieved with the current voltage calibration <level> voltage threshold in volts ([d]d.ddV) or raw ADC steps (0xhhh) <time> number of consecutive seconds the voltage must remain above or below the threshold value for the trigger to activate |
| VL WAKE: <ON/OFF>, <</>>[!]<level> FOR <time> s | 15.3.3 | Voltage level wakeup trigger. Same format as the voltage level sleep trigger. |
| VCHG WAKE: <ON/OFF>, [+/-][!]<change> IN <time> ms | 15.3.4 | Voltage change wakeup trigger: <ON/OFF> trigger on/off [+/-] specifies whether the trigger detects only rising voltage (+), only falling voltage (-), or a voltage change in any direction (no sign) [!] this designator indicates that the voltage change setting is invalid, i.e. cannot be achieved with the current voltage calibration <change> voltage change in volts ([d]d.ddV) or raw ADC steps (0xhhh) <time> number of milliseconds between voltage samples |

STSLEEP [*delay*]

Enter sleep mode. Takes optional *delay* parameter in seconds. When the delay is specified, the command prints "OK", and returns to the command prompt. The sleep mode will be entered after the specified delay time. When the parameter is empty or 0 seconds delay is specified, the command will print "OK<CR>" and immediately put the device to sleep.

STSLLT

Report last sleep/wakeup triggers, in this format:

SLEEP: <sleep trigger>
WAKE: <wakeup trigger>

Sleep trigger can be one of the following:

| Trigger | Description |
|---------|--|
| NONE | Device did not enter sleep mode since last reset |
| CMD | STSLEEP or ATLP command |
| UART | UART inactivity timeout |
| EXT | External sleep control input |
| VL | Voltage level |

Wakeup trigger can be one of the following:

| Trigger | Description |
|---------|--|
| NONE | Device did not wake up from sleep since last reset |
| UART | UART Rx pulse |
| EXT | External sleep control input |
| VL | Voltage level |
| VCHG | Voltage change |

Example: SLEEP: CMD
WAKE: UART

STSLPCP 0|1

Set polarity of the PWR_CTRL output.

0: Normal power = HIGH, Low power mode = LOW
1: Normal power = LOW, Low power mode = HIGH

The default setting is 0.

Note: This command is available only for stand-alone ICs.

STSLU *sleep, wakeup*

UART sleep/wakeup triggers on/off. Each of the two parameters can be independently configured as "on" or "off". The first parameter specifies sleep trigger (UART

inactivity timeout) setting, and the second one specifies wakeup trigger (low pulse on UART Rx input) setting. The defaults are sleep = off, wakeup = on.

Example: STSLU off, on

STSLUIT *sec*

Set UART inactivity timeout. The parameter is specified in seconds (decimal). The default is 1200 (20 minutes).

STSLUWP *min, max*

Set UART wakeup pulse timing. The parameters are specified in microseconds. The defaults are min = 0, max = 30000 (30 milliseconds).

STSLVG *on|off*

Voltage change wakeup trigger on/off. The default is off.

STSLVGW [*+|-*]volts, *ms*

Configure voltage change wakeup trigger. The first parameter specifies voltage difference between two samples. The optional '+' or '-' sign, preceding the voltage, specifies whether the trigger detects only rising voltage (+), only falling voltage (-), or a voltage change in any direction (no sign). The second parameter specifies the time between the samples in milliseconds. The value specified will be rounded to the nearest multiple of 250 ms, with any value below 250 being rounded up to the minimum setting of 250 ms. The default setting is 0.2, 1000 (voltage changing by 0.2V in any direction, with one second between the samples).

Example: STSLVGW +0.15, 750

STSLVL *sleep, wakeup*

Turn voltage level sleep/wakeup triggers on/off. Each of the two parameters can be specified as "on" or "off". The first parameter specifies the sleep trigger setting, and the second parameter specifies the wakeup trigger setting. The defaults are sleep = off, wakeup = off.

STSLVLS <|> volts|0xhhh, *sec*

Configure voltage level sleep trigger. The "<" or ">" character specifies whether the trigger region is above or below the threshold voltage: "<" = below, ">" = above. The threshold voltage can be specified in volts with the maximum precision of two decimal places. It can also be specified in raw ADC steps by prefixing the value with '0x'. The *sec* parameter specifies how long the voltage must remain above or below the threshold before the device will enter sleep mode. The default is <13.00, 600 (below 13V for 600 seconds).

Examples: STSLVLS <12.85, 60
STSLVLS >0x8ab, 0

STSLVLW <|> volts|0xhhh, sec

Configure voltage level wakeup trigger. The “<” or “>” character specifies whether the trigger region is above or below the threshold voltage: “<” = below, “>” = above. The threshold voltage can be specified in volts with the maximum precision of two decimal places. It can also be specified in raw ADC steps by prefixing the value with ‘0x’. The sec parameter specifies how long the voltage must remain above or below the threshold before the device will wake up from sleep. The default is >13.20, 1 (above 13.2V for 1 second).

Examples: STSLVLW >13.15, 0
STSLVLW <0x8cd, 5

STSLX sleep, wakeup

Enable or disable sleep/wakeup triggers associated with the external sleep control input (SLEEP pin). Each of the two parameters can be specified as “on” or “off”. The defaults are sleep = off, wakeup = on.

8.12 Bluetooth Specific ST Commands

STBTCOD hhhhhh

Set the Bluetooth modem CoD (Class of Device). The input is the 6-digit hex CoD. The device needs to be power-cycled for this command to take effect. This is set in non-volatile memory, so it will survive a power-cycle. However, it will be reset during a factory reset, and may be changed during a firmware update.

STBTDN ascii

Set the Bluetooth broadcasting device name. Accepts printable ASCII characters (0x20 to 0x7E). Maximum length is 20 characters. Leading and trailing spaces will be ignored. The ‘%’ character can be used to select different options: To include an actual ‘%’ character in the device name, two “%%” must be used. To include the last *n* digits of the device serial number, “%ns” must be used. To include the last *n* digits of the Bluetooth address, “%nR” must be used. The parameter *n* is optional and will default to 5. If one ‘%’ is given, but is not

STSLXP 0|1

Configure polarity of the SLEEP input.

0: LOW = sleep, HIGH = wake up
1: LOW = wake up, HIGH = sleep

The default setting is 0.

Note: This command is available only for stand-alone ICs, and microOBD 200 (STN1120).

STSLXS

Print the status of the external SLEEP input. Responds with “WAKE” or “SLEEP”.

STSLXST ms

Specify how long the SLEEP input must be held in the active (“sleep”) state to put the device to sleep. The ms parameter is the minimum time in milliseconds. The default is 3000 (3 seconds).

STSLXWT ms

Specify how long the SLEEP input must be held in the inactive (“wake”) state to wake the device from sleep. The ms parameter is the minimum time in milliseconds. The default is 2000 (2 seconds).

followed by ‘%’, “nR”, “ns”, ‘R’, or ‘s’, the operation will fail, and the device name will not be changed.

Note: This command requires a power cycle for the change to take effect.

Examples: STBTDN OBDLink MX %3s
If the serial number is 1234567890 the device name will be “OBDLink MX 890”.

STBTDN My Tool %4R%%s
If the serial number is 1234567890 and the Bluetooth address is 00043EABCDEF, the device name will be “My Tool CDEF%67890”.

Note: Commands in this section 8.12, “Bluetooth Specific Commands” are only available for Bluetooth devices:

- OBDLink MX+
- OBDLink MX
- OBDLink LX

8.13 General Purpose I/O ST Commands

STGPC *pin1:options* [, ..., *pinN:options*]

Configure general purpose pins. Consult device datasheet for open drain, pull-up, and pull-down feature availability of each general purpose pin.

pin: GPx pin number

options:

| | |
|----|----------------------------|
| I | input |
| O | output |
| N0 | disable open drain |
| N1 | enable open drain |
| U0 | disable internal pull-up |
| U1 | enable internal pull-up |
| D0 | disable internal pull-down |
| D1 | enable internal pull-down |

Examples:

```
STGPC 0:0, 25:0, 3:I, 5:I  
STGPC 1:0:N1, 2:I:U0
```

STGPIR *pin1* [, ..., *pinN*]

Read general purpose inputs. Results are reported as binary 1/0 values, separated by commas:

Example: STGPIR 0, 4, 7, 63

Response: 1, 0, 0, 1

STGPIRH *pin1* [, ..., *pinN*]

Read general purpose inputs, report values as LSB-aligned hex value.

Example: STGPIR 0, 4, 7, 63

Response: 09

STGPOR *pin1* [, ..., *pinN*]

Read output latches. Results are reported as binary 1/0 values, separated by commas.

Example: STGPOR 2, 4, 31

Response: 0, 1, 0

STGPOW *pin1:state* [, ..., *pinN:state*]

Write output latches.

Example: STGPOW 2:0, 4:1, 31:0

8.14 Periodic Messaging ST Commands

OBDLink devices feature a periodic messaging system that can be used to automatically send messages in the background. The protocol must be open in order for the messages to be sent. You can open the protocol by sending an OBD request or by sending the STPO command (if a protocol is already selected). The CAN monitoring mode, set by STCMM, will affect whether messages are sent while monitoring (STM or STMA). Exiting a monitoring session will close the protocol. STPX will open the protocol but will not close it when it finishes. This feature currently only works with CAN protocols.

A special note of caution: the “add periodic message” command (STPPMA) dynamically allocates a block of RAM to store the message information. Since RAM is finite, it is possible to add too many periodic messages. If not enough memory is available to add the message, the command will return the OUT OF MEMORY error. If this occurs, OBD requests may also start generating OUT OF MEMORY errors because the OBD message memory buffer is located in the same RAM.

The maximum number of messages that can be added depends on a number of factors and may change slightly between firmware revisions even for the same scenario. For example, the memory allocation scheme may be optimized, or new functionality is added. To minimize the impact of these changes on your software, make sure that your code anticipates and gracefully handles OUT OF MEMORY errors.

STPPMA *period, header, data*

Add a periodic message using the currently set protocol. The period parameter is the time in milliseconds between messages. Header and data parameter will set their respective bytes of the message.

When adding a periodic message, the protocol will be set based on the currently set protocol, switching protocols will not affect the periodic message format.

Returns a hex value representing the periodic message’s handle.

Example: STPPMA 250, 7DF, B302

1

STPPMC

Clear all periodic messages.

STPPMD *handle*

Delete a specific periodic message using the handle returned when added.

Example: STPPMD 1

9.0 Error Messages

This section documents the error and status messages that you can receive from the OBDLink.

?

Invalid command. This error is displayed if the syntax of the command is not correct, or the command is not appropriate for the context (e.g., attempting to use the ATFI command with a protocol other than 5).

ACT ALERT

The IC will switch to low power mode in 1 minute, unless it detects activity on UART. The timeout can be set using bit 4 of PP 0E to either 4 or 19 minutes.

Note: This message can only occur in the ELM327 PowerSave mode (see Section 15.1), and only if the PP 0E bit 3 is 1.

BUFFER FULL

The IC ran out of memory to store incoming OBD messages. This error is not very common with the OBDLink, since it has a much larger buffer than the 256-byte buffer provided by the ELM327. If you are receiving BUFFER FULL messages, consider increasing UART baud rate (Section 8.2), turning off headers (ATH0) and spaces (ATS0), or use OBD message filters (Section 8.3).

BUS BUSY

OBDLink tried to send an OBD command but timed out before it could detect an idle bus state. In the majority of cases, this error indicates a wiring problem – one or more of the bus lines is stuck in an active state.

BUS ERROR

The IC made an attempt to send an OBD message, but the bus voltage did not change as expected. This is most likely due to a circuit problem (a short or an open) or the bus being shorted to battery voltage or ground.

CAN ERROR

The CAN peripheral had trouble transmitting or receiving messages. Possible causes include:

- Device not connected to the CAN bus
- Wrong protocol/CAN baud rate
- Wiring problem

DATA ERROR

Data formatting error: too few bytes received, incorrect header format, symbol timing, or framing error.

<DATA ERROR

This error message follows a response that failed an error detection byte check (CRC or checksum). It may be caused by any of the following:

- Bad electrical connection (e.g., oxidized diagnostic connector pins)
- Electromagnetic noise
- Cable that is too long, or poorly shielded
- Circuit problem
- CAN Auto Formatting (CAF) enabled for a protocol other than the ISO 15765-4

FB ERROR

Feedback error. OBDLink detected a mismatch between the commanded transmitter state (high or low), and the signal state seen at the receiver. Possible causes:

- Circuit problem
- J1850 bus lines or K-line stuck high or low
- Message collisions on K-line. This can happen when another scan tool is transmitting in parallel, or when the ATST timeout is too short, causing OBDLink to “step” on ECU replies to the previous request

FC RX TIMEOUT

Timeout error. OBDLink detected a mismatch between the commanded transmitter state (high or low), and the signal state seen at the receiver. Possible causes:

- Circuit problem
- J1850 bus lines or K-line stuck high or low
- Message collisions on K-line. This can

LP ALERT

OBDLink is 2 seconds away from entering Low Power (standby) mode. The purpose of this message is to alert the host and allow it sufficient time to perform any housekeeping tasks (e.g., save data to nonvolatile memory before the power is cut). At this point, hardware reset is the only way to prevent the IC from entering the Low Power mode.

Note: This message can only occur in the ELM327 PowerSave mode (see Section 15.1), and only if the PP 0E bit 3 is 1.

LV RESET

Low voltage reset (also known as “brown-out reset”). OBDLink has a built-in brown-out reset feature that resets the device when the supply voltage drops too low. After the voltage rises back above the trip point, the IC performs a full reset and prints “LV RESET”.

NO DATA

There was no response from the vehicle before a timeout occurred. The request may not be supported, was blocked by the filters (see Section 11.0), or the timeout (ATST) is too short.

OUT OF MEMORY

Not enough available RAM to complete the requested operation.

<RX ERROR

CAN peripheral detected an error in the received message. Incorrect baud rate is the most likely cause.

STOPPED

A character received on UART interrupted the execution of an OBD command.

The current version of firmware ignores linefeed characters (0x0A) to prevent this error from occurring inadvertently.

UART RX OVERFLOW

UART Rx buffer overflow occurred. This error is most likely to happen under ISO 9141 and ISO 14230, when a large amount of UART data is sent to the OBDLink at a high baud rate, while the device is busy transmitting keep-alive messages.

UNABLE TO CONNECT

OBDLink was unable to detect the OBD protocol. Possible explanations include:

- Vehicle is not OBD-II compliant
- Ignition is off
- No power on diagnostic connector (e.g., blown fuse)
- Wiring problem

10.0 OBD Requests

The OBDLink uses the same format for OBD requests as the ELM327. Please refer to the “OBD Commands” section of the ELM327 datasheet for information.

See the following standards for more information about legislated On-Board Diagnostics:

SAE J1979: E/E Diagnostic Test Modes. This document describes data reporting requirements of On-Board Diagnostic regulations in the United States and Europe, and any other region that may adopt similar requirements in the future. The ISO equivalent of this standard is ISO 15031-5.

SAE J2190: Enhanced E/E Diagnostic Test Modes. This document describes the implementation of Enhanced Diagnostic Test Modes, which are intended to supplement the legislated Diagnostic Test Modes defined in SAE J1979 standard. Modes are defined for access to emission related test data beyond what is included in SAE J1979, and for non-emission related data.

SAE J2178: Class B Data Communication Network Messages. This document describes the information contained in the header and data fields of non-diagnostic messages for automotive serial communications based on SAE J1850 Class B networks.

11.0 OBD Message Filtering

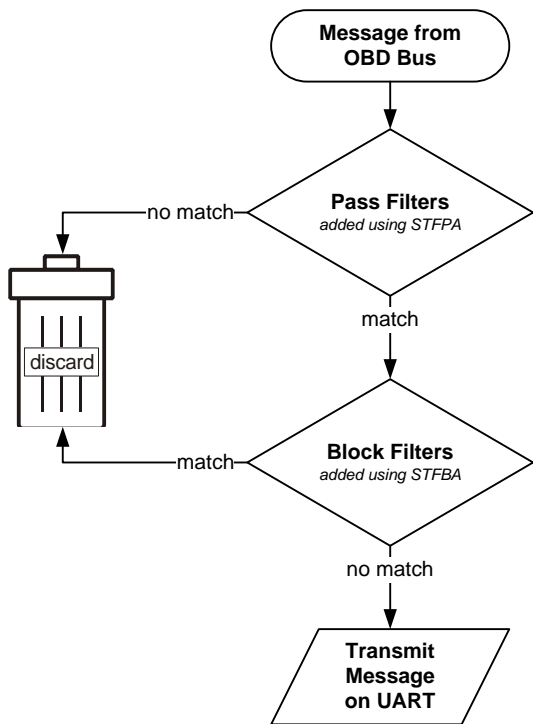
OBDLink supports pass, block, and flow control filters. Their operation is backwards compatible with the ELM327, however OBDLink filtering scheme is much more powerful and flexible. It allows the user to set up multiple filters and fine tune them to receive only those messages that are of interest to the user.

11.1 Non-CAN Protocols

Non-CAN protocols (see ATSP, protocols 1 through 5) do not use flow control filters (refer to Figure 2). When a message comes from the OBD bus, it is compared to the pass filters. If the message does not match one of the filters, it is discarded. Otherwise, the message is compared to the block filters. If there is a match, the message is discarded. Finally, if the message goes through both the pass and block filters, it is transmitted on the UART.

In **automatic filtering mode**, pass filters are automatically set based on the currently set message header. Table below lists the filters set up from the default headers:

| Protocol(s) | Filter (pattern, mask) |
|------------------------|------------------------|
| J1850 PWM J1850 VPW | 006B00, 14FF00 |
| ISO 9141-2 | pass all |
| ISO 14230-4 | 80F100, C0FF00 |



While in the automatic filtering mode, anytime the message header is changed, either by the user (ATSH command) or because of a protocol change, the pass filter gets updated.

As soon as the user clears the pass filters, or adds a pass filter, automatic filtering mode is switched off. Issue ATAR to clear all custom filters, set up default filters, and turn on the automatic filtering mode.

Some commands temporarily alter the contents of the pass filters.

For example, while the ATMA or STMA commands are active, they temporarily disable any previously added pass or block filters, and set up one “pass all” filter. Upon termination of the command, the “pass all” filter is removed, and the old pass/block filters are restored.

ATMR and ATMT commands behave the same way, except that instead of setting a “pass all” filter, they set up a filter to accept messages based on the address of the receive (or transmit) node passed as the parameter.

STM command uses all filters “as-set”: it does not modify them in any way.

ATSR turns off the automatic filtering mode, and sets up a pass filter to accept messages sent to the receive address provided as the parameter to ATSR.

In order to directly manipulate the filters, use the filtering commands described in Section 8.10, “Filtering ST Commands”.

Figure 2 – Message Filtering: Non-CAN Protocols

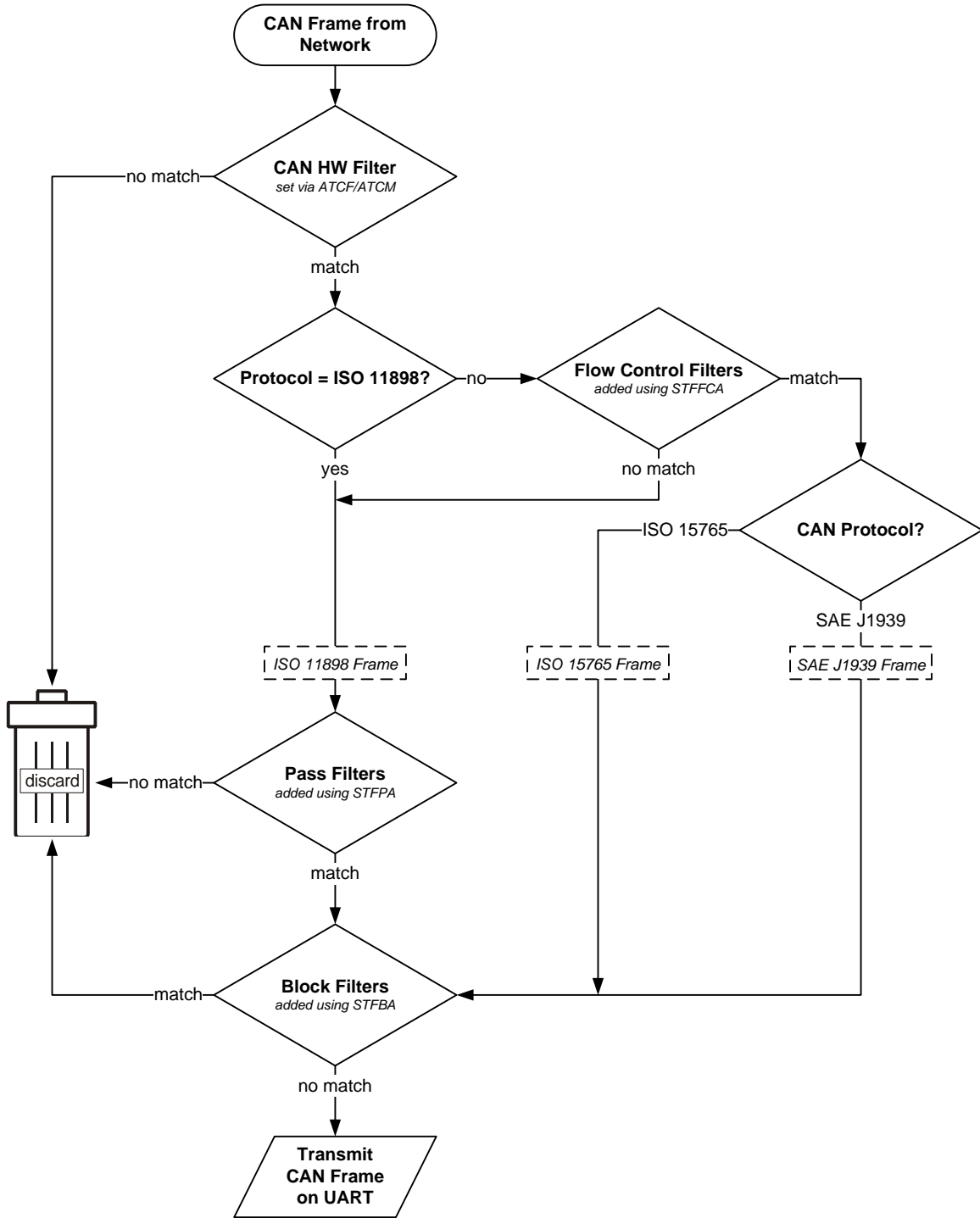


Figure 3 – Message Filtering: CAN Protocols

11.2 CAN Protocols

This section describes how message filtering works with CAN protocols (see ATSP, protocols 6 through C).

When a CAN frame comes in from the network, it must first go through the CAN hardware filter. If there is no match, the frame is discarded.

If the protocol is set to ISO 11898, all incoming frames are treated as ISO 11898 frames, and are sent straight through to the pass filters.

If the protocol is either ISO 15765 or J1939, the frame is compared against the flow control filters to determine whether it is an ISO 15765/J1939 or an ISO 11898 (“raw”) CAN frame.

ISO 11898 frames are compared to the pass filters. If there is no match, the frame is discarded. Otherwise, the frame is compared to the block filters, and if there is no match, it is transmitted on the UART.

ISO 15765/J1939 frames bypass the pass filters. As long as the comparison with the block filters results in a “no match”, the frame is transmitted on the UART.

Under the ISO 15765 protocol, in **automatic filtering mode**, flow control filters are automatically set based on the currently set message header. The following table lists the filters set up from the default CAN headers:

| CAN ID Type | Filter (pattern, mask) |
|-------------|------------------------|
| 11-bit | 7E8,7F8 |
| 29-bit | 18DAF100,1FFFFFF0 |

While in the automatic filtering mode, anytime the user changes the headers using the ATSH command, or by switching from 11-bit to 29-bit CAN IDs, the flow control filter gets updated.

Automatic filtering mode is switched off when the user clears the flow control filters, adds a flow control filter, or sets the CAN hardware filter. To clear all custom filters, and set up default filters, issue the ATAR command.

The ATMA command sets the flow control, pass, and block filters for “pass all, block none” operation. When the command terminates, the old filters are restored.

The STMA command works the same way as ATMA, except that it also sets the CAN hardware filter for “pass all” operation. Upon termination, the old CAN hardware filter is restored.

ATMR and ATMT commands behave the same way, except that instead of setting a “pass all” filter, they set up a filter to accept messages based on the address of the receive (or transmit) node passed as the parameter.

STM command uses the filters “as-set”: it does not modify them in any way.

ATSR turns off the automatic filtering mode, and sets up a pass filter to accept messages sent to the receive address provided as the parameter to ATSR.

In order to directly manipulate the filters, use the filtering commands described in Section 8.10, “Filtering ST Commands”.

12.0 ISO 15765 Message Reception

For most users, CAN message reception works “out of the box”, as configured by default. However, for those users who wish to take full advantage of the OBDLink’s CAN architecture, it is important to understand what goes on behind the scenes.

You will notice that the flowchart in Figure 4 is simply a more detailed version of the flowchart from Section 11.2. Therefore, in this section we will omit the

left half of the flowchart and describe what happens when the incoming CAN frame is identified as an ISO 15765 CAN frame.

If the RTR bit is set, the frame is determined to be a **remote frame**. As long as it is not discarded by the block filters, it gets sent over UART.

If the frame is not a remote frame, additional processing takes place. The protocol control

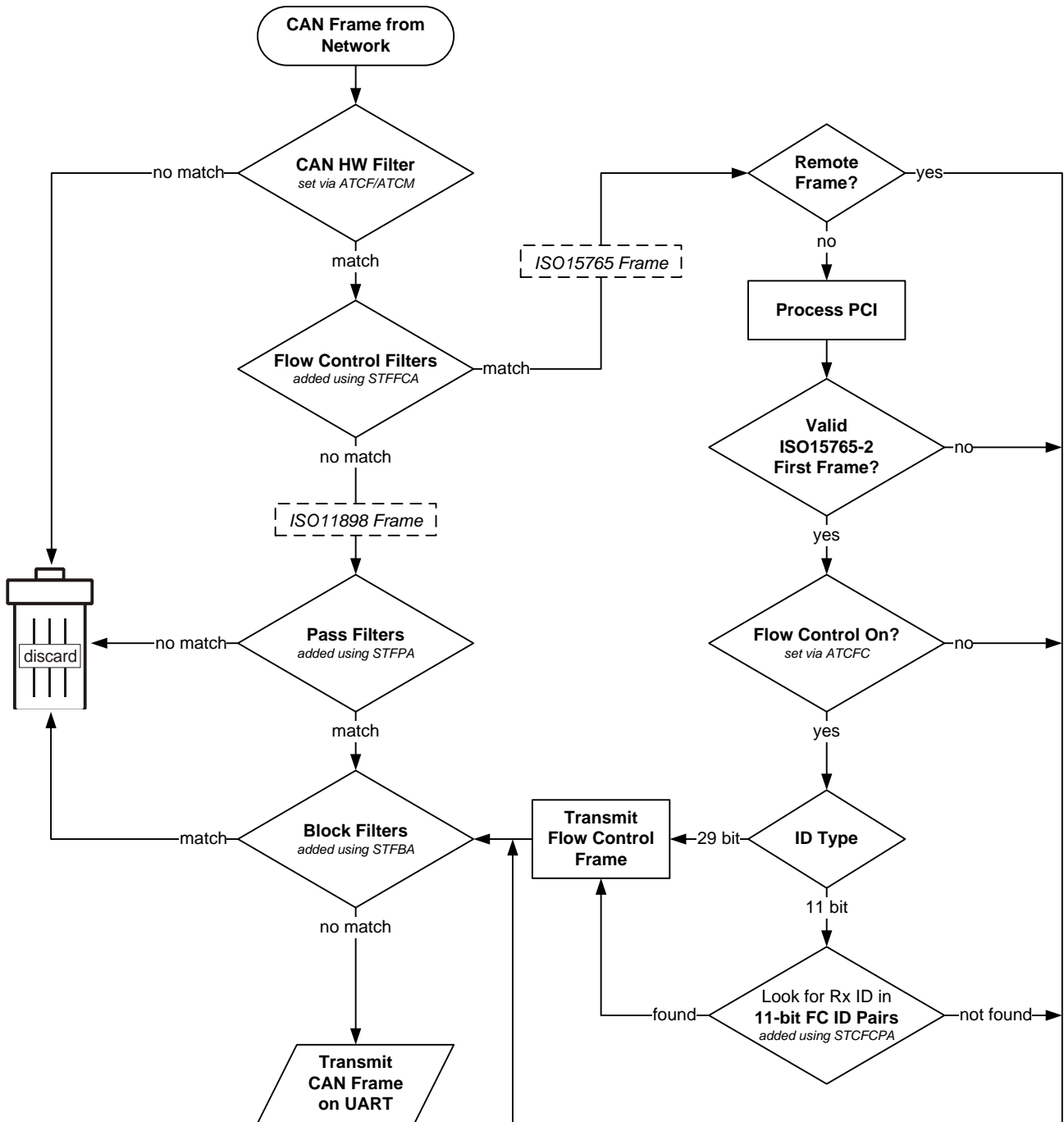


Figure 4 – ISO 15765 Message Reception

OBDLink Family

information (PCI) byte is processed to determine whether it is a valid ISO 15765-2 frame, and what type of frame it is (single, first, consecutive, or flow control).

If the frame is not a valid ISO 15765-2 first frame, or if flow control is off, it is passed to the block filters.

If the frame is a valid ISO 15765-2 **first frame**, and **flow control** is on, what happens next is determined by the ID type.

A **29-bit** frame ID contains the address of the transmitter, therefore, a flow control frame is transmitted for every ISO 15765-2 first frame, before the frame is passed to the block filters.

An **11-bit** frame is first compared to any flow control 11-bit address pairs. If no address pairs have been added (via the STCFCPA command), then the flow

control frame will be transmitted with TxID = RxID - 8 (e.g. for the first frame with ID 7E8, flow control frame will be transmitted on ID 7E0). If any address pairs have been added, then the Rx ID will be compared to the FC address pairs, and if a match is found, a flow control frame will be transmitted on the corresponding Tx ID; if a match is not found, no flow control frame will be sent.

Note that when adding custom flow control filters for 11-bit CAN messages using the STFFCA command, it is important to add corresponding flow control 11-bit address pair (using STCFCPA) if the user wants to have the flow control frames be sent to IDs other than RxID - 8.

13.0 CAN Addressing Formats

OBDLink supports all 4 CAN addressing formats. There is limited support for backwards compatibility with the ELM327, however OBDLink addressing scheme is much more powerful and flexible. It allows the user to set the desired format and filter CAN traffic as desired.

See also **ISO 15765-2 Section 7.3, “Mapping of the N_PDU fields”**.

13.1 Normal

With normal addressing format, a unique CAN identifier encapsulates the source address and the target address. There are no specific fields in this identifier. This addressing format will use the default flow control “address” pairs, listed in section 12.0, “ISO 15765 Message Reception”. Additional pairs may be added with the STCFCPA command.

This is the default addressing format for 11-bit CAN protocols.

To use this addressing format, use the following setup sequence.

1. Set addressing format to normal
2. If using multi-frame messaging
 - a. 11-bit: use flow control offset
 - b. 29-bit: must add flow control pairs
3. Setup receive filters when not using default flow control pairs

Example:

```
STP 33
STCAF 0
STCFCPA 7E0, 7E8
```

```
STCAF 0
STCFCPA 18DA10F1, 18DAF110
```

13.2 Normal fixed

Normal fixed addressing is a sub-format of normal addressing where the mapping of the address information into the CAN identifier is further defined. When using normal fixed addressing, only 29-bit CAN identifiers are allowed. This format will use the default flow control pair scheme, listed in section 12.0, “ISO 15765 Message Reception”. Additional pairs may be added with the STCFCPA command.

This is the default addressing format for 29-bit CAN protocols, with no pairs defined.

To use this addressing format, use the following setup sequence.

1. Set protocol to ISO 15765, 29-bit
2. Set addressing format to normal
3. Clear call CAN flow control filters

Example:

```
STP 34
STCAF 0
STFFCC
```

13.3 Extended

Extending addressing takes one byte from the data field and uses it as an address field.

Example:

```
STCAF 1, F2
STFA
ATTA
```

13.4 Mixed

Mixed addressing is the addressing format to be used if Mtype is set to remote diagnostics.

Example: STCAF 2, F2

14.0 SAE J1939

The SAE J1939 protocol is a subset of CAN designed for heavy-duty vehicles such as trucks, buses, and earth-moving equipment.

The flowchart (Figure 5) describes OBDLink's implementation of the J1939 message reception algorithm. The left half of the flowchart is described in detail in Section 11.2. This section describes what happens after the incoming CAN frame has been identified as a J1939 frame.

If at least one PGN filter is defined, and the message has a 29-bit header, it is processed based on its type:

- **ACK** (Acknowledgement)
- **TP.CM** (Connection Management)
- **TP.DT** (Data Transfer)

The algorithms used to process the frames, are shown in subsequent flowcharts.

To request a PGN, enter it as a 3-byte value:

```
>00FEEE
```

The response may look something like this:

```
6 0FEEE 00 FA 78 B0 B6 FF FF FF FF
```

By default, the OBDLink will convert the 3-byte request to little-endian format, before transmitting it on the J1939 bus. Use ATJ S to disable this behavior, and ATJ E to turn it back on. If automatic filtering is enabled

(i.e., no custom filters are defined), the OBDLink will add a temporary filter, which will be deleted after the message reception is completed.

The OBDLink is capable of monitoring multiple PGNs at the same time. To use this feature, use the STFPGA command to add the filters, and STM to monitor. These filters also work with multi-frame J1939 messages.

When the STFPGA command is called with the target address parameter omitted or set to FF, the filter will pass PDU1 messages containing the PGN and addressed to FF, as well as all PDU2 messages containing the PGN.

When the target address is specified, and is other than FF, the PGN filter will pass messages that contain the specified PGN and are addressed to the target address, in addition to the broadcasted messages.

The following example shows the commands necessary to set up the OBDLink to receive EEC1 (PGN 61444) and DM1 messages (PGN 65226):

```
ATZ
STP 42
STCMM 1
ATH 1
STFAC
STFPGA F004
STFPGA FECA
STM
```

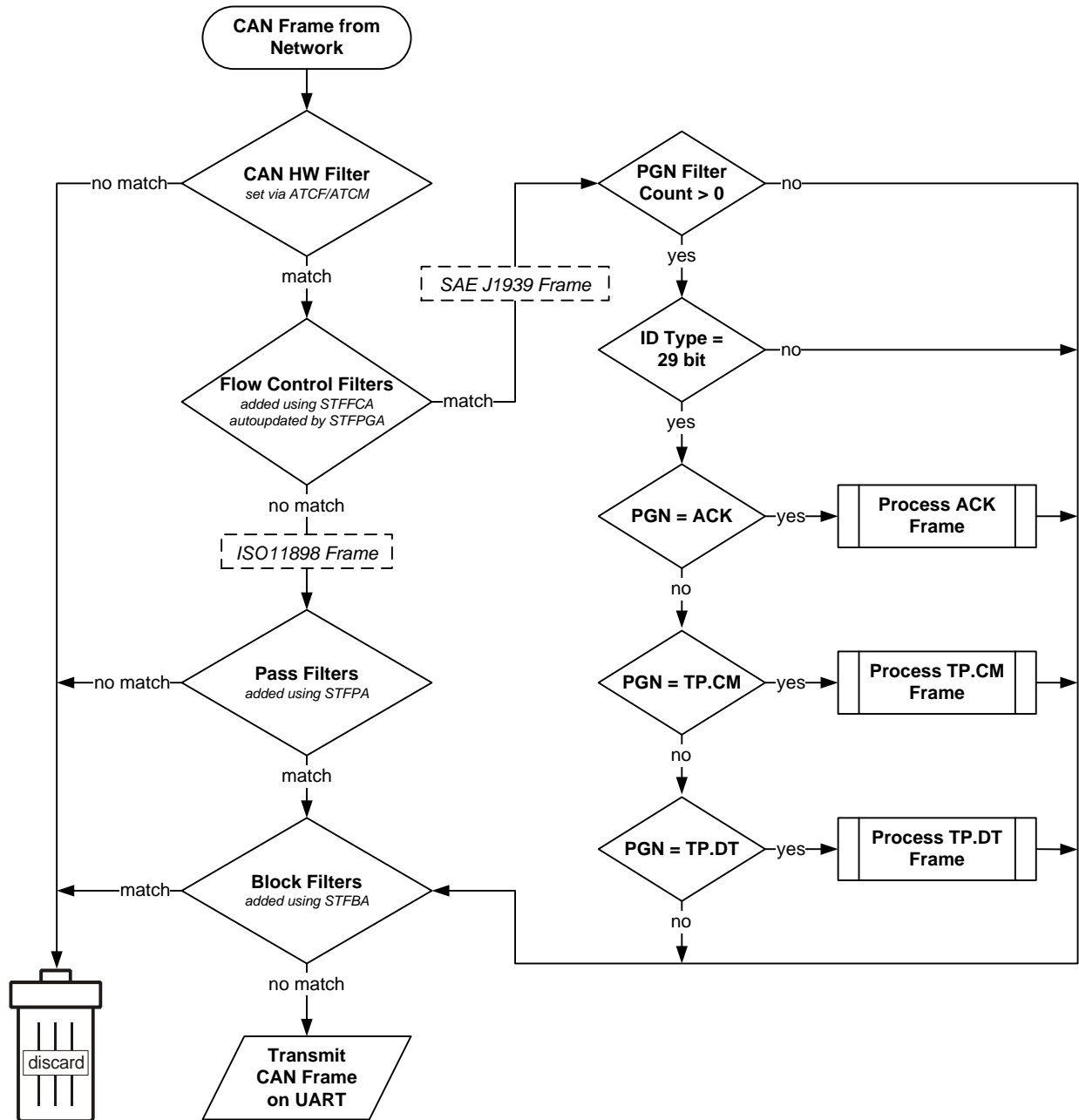



Figure 5 – SAE J1939 Message Reception Flow

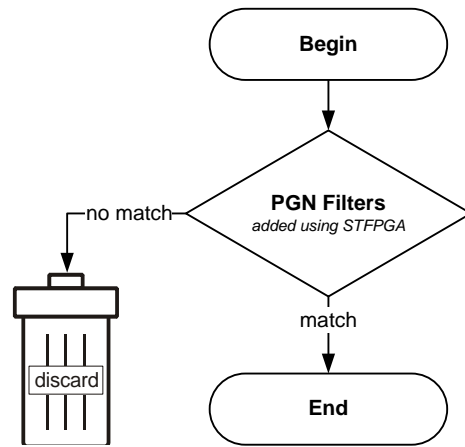


Figure 6 – Process ACK Frame

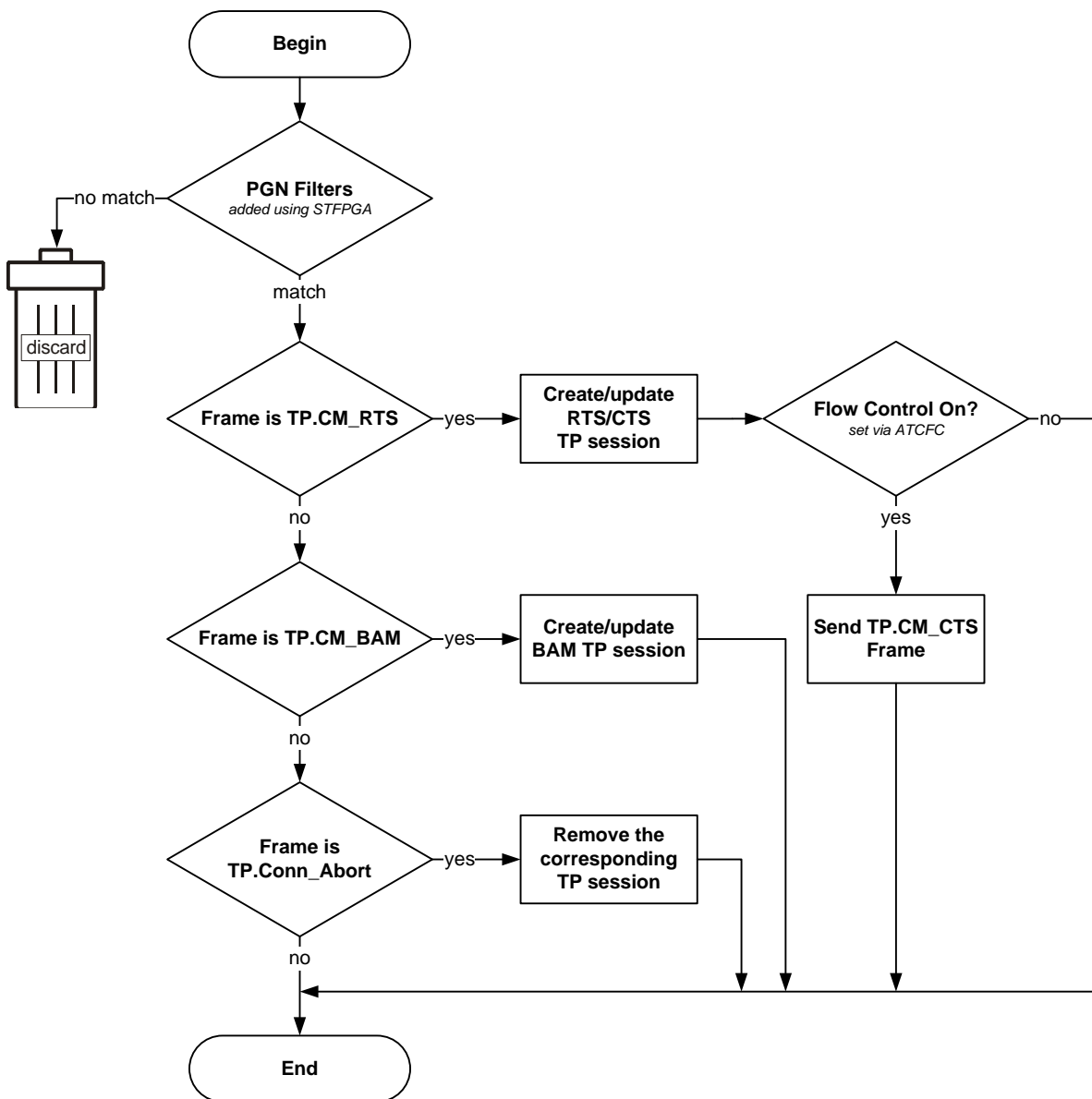


Figure 7 – Process TP.CM Frame

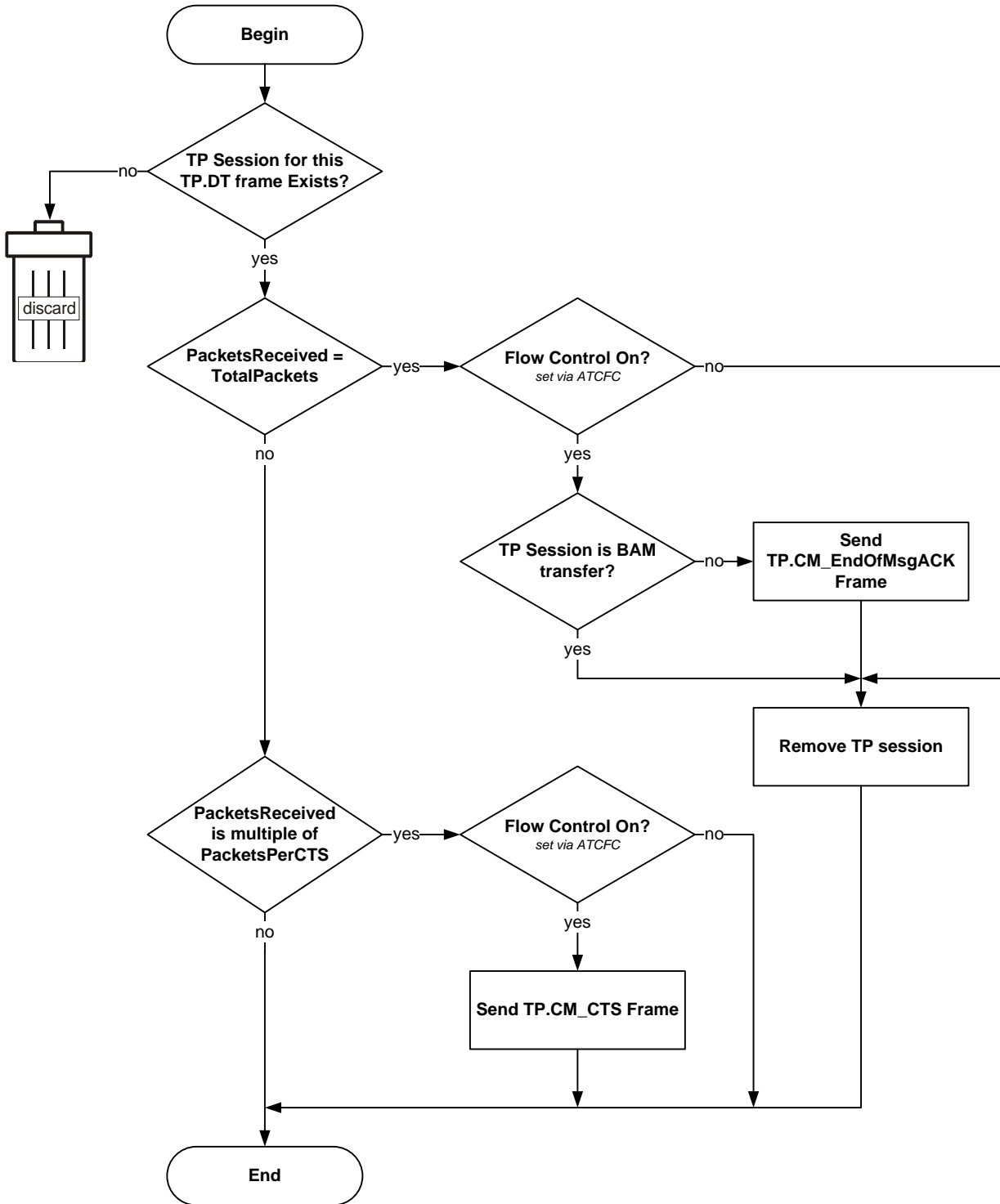


Figure 8 – Process TP.DT Frame

15.0 PowerSave Functionality

The OBDLink features a sophisticated power management system (PowerSave™) that can be used to put the device in low power mode. The primary purpose of PowerSave is to prevent the vehicle's battery from being drained when the device is left plugged in for extended periods of time (e.g., permanent in-vehicle installations).

The concept of a **trigger** is key to understanding the operation of PowerSave. A *trigger* is an event or a condition that causes the device to either go to sleep, or wake up from sleep. "Go to sleep after 5 minutes of UART inactivity" and "wake up when vehicle system voltage goes above 12.8 volts" are examples of triggers. Each trigger can be independently enabled or disabled.

The following sections describe the PowerSave functionality, while Section 8.11 describes the commands and parameters used to configure and control the power management system. You can use the STSLCS command to print a summary of the active PowerSave configuration settings.

15.1 Control Modes

There are **two control modes** for the PowerSave functionality: **native** and **ELM327**. Use bit 7 ("master enable") of the programmable parameter 0E (**PP 0E**) to switch between the modes. See the description of the ATPP command for more information about PP 0E.

By default, OBDLink is operating in the native PowerSave control mode.

15.1.1 Native PowerSave Mode

When the "master enable" bit of PP 0E is cleared, or PP 0E is off, OBDLink is in the **native** PowerSave control mode.

In this mode, the rest of the 0E programmable parameter bits are ignored and the PowerSave is controlled exclusively via ST Sleep commands. In native mode, the ATLP command is unavailable. Also, the ELM327 "ACT ALERT" and "LP ALERT" messages are not displayed.

15.1.2 ELM327 Low Power Mode

Note: *this mode had been implemented for compatibility with software written for the ELM327. The native PowerSave mode has a number of important advantages over the ELM327 Low Power mode, including greater flexibility, more straightforward configuration, and default settings that had been optimized for more reliable performance.*

When the "master enable" bit of the 0E programmable parameter is set and PP 0E is on, OBDLink is in the **ELM327 control mode**.

In this mode, most PowerSave settings are overridden by the PP 0E. However, the following settings that do not have a PP 0E equivalent can still be adjusted via their corresponding ST Sleep commands:

- **UART wakeup pulse timing** (STSLUWP)
- **External SLEEP input polarity** (STSLXP)
- **Voltage based triggers** (STSLVL, STSLVLS, STSLVLW, STSLVG, STSLVGW)

By default, instead of the fixed ELM327 minimum UART Rx wakeup pulse requirement of 128 μs, OBDLink pulse width is set to 0 (20 ns). This is done to allow the user to wake up the device by sending characters, even at the highest supported UART baud rate.

In the ELM327 PowerSave control mode, STSLCS command will report the actual active configuration that is set via the 0E programmable parameter.

OBDLink external SLEEP input functions as the ELM327 IgnMon input.

15.2 Sleep Triggers

Device can be put to sleep using one of the four sleep triggers:

- **Sleep commands** (STSLEEP and ATLP)
- **UART inactivity** (STSLU)
- **External SLEEP input** (STSLX)
- **Voltage level** (STSLVL)

Multiple sleep triggers can be enabled at the same time. The first trigger that gets activated will put the device to sleep.

By default, all sleep triggers are off.

Warning: *before you enable a sleep trigger or issue the STSLEEP command, make sure that the wakeup triggers are enabled and properly configured. The only other means of bringing the device out of the sleep state is to initiate a hardware reset, either via the RESET input, or by cycling the power.*

15.2.1 STSLEEP and ATLP Commands

The device will go to sleep when it receives the ATLP or STSLEEP command. The ATLP command is available only in the ELM327 Low Power Mode.

The STSLEEP command has an optional *delay* parameter. The purpose of the delay is to prevent the device from going to sleep prematurely: some hosts randomly toggle the UART communication lines and can unintentionally wake up the device as they are shutting down or entering the standby mode.

15.2.2 UART Inactivity

The OBDLink can be configured to go to sleep automatically after a period of UART inactivity.

UART inactivity sleep trigger is turned on/off using the STSLU command (it is off by default). Use the STSLUIT command to set the **UART inactivity sleep timeout**.

Warning: *OBDLink UART inactivity sleep trigger is disabled while any command is executing. In other words, OBDLink must print the command prompt before it will act on a sleep trigger. Therefore, commands which require UART activity to terminate their execution (e.g., ATMA, STMA, etc.) will keep the device awake indefinitely. A continuous stream of incoming messages may also prevent the device from going to sleep. This may occur, for example, if message filters are set up to accept bus traffic intended for other nodes.*

15.2.3 External SLEEP Input

Another automatic sleep trigger is the **external SLEEP input**. This trigger is off by default. When enabled (using the STSLX command), it allows the external circuitry to control the sleep state.

When OBDLink senses a logic low on the SLEEP pin, it immediately aborts any OBD reception in progress, or monitoring command that is active at the time, and prints the command prompt. It then monitors the SLEEP input and enters the PowerSave mode if the minimum low time (specified by the STSLXST command) is satisfied.

Note: *Stand-alone ICs, and microOBD 200 (STN1120) allow the polarity of the external SLEEP input to be inverted, via the STSLXP command.*

The following are some of the possible uses of this trigger:

- **“Host present” detect** – sleep/wakeup when the host disconnects/connects or starts up/shuts down (goes into standby)
- **Ignition key detect** – sleep/wakeup depending on the ignition key position
- **Direct sleep control** via host microcontroller

The logic state of the SLEEP input state can be polled using the STSLXS and ATIGN commands.

See Section 15.6 for device-specific implementation details.

15.2.4 Voltage Level Sleep

The OBDLink can also enter sleep mode based on the voltage on the ANALOG_IN input. This trigger can be configured in the variety of ways. The settings specify voltage threshold, whether the trigger is active above or below the threshold setting, and the amount of time the voltage must stay below or above the threshold for the device to enter sleep mode.

The voltage level sleep trigger can be used to put the device into the low power mode when the engine shuts down and the alternator stops generating power. The delay is designed to prevent the device from entering sleep when the system voltage dips below the specified threshold due to momentary load changes. The default settings should work for most vehicles with 12-volt lead-acid batteries.

Use the STSLCS command to verify that the trigger was properly configured. An exclamation point (!) in front of the voltage setting means that the trigger setting is invalid, and the trigger will never activate. Refer to Section 15.4, “Voltage Trigger Considerations” for more information.

Note: *In order for the voltage level sleep trigger to operate properly on the stand-alone ICs, or the microOBD 200 module (STN1120), the voltage measurement must be calibrated using the ATCV or STVCAL commands. The calibration is not necessary for the OBDLink scan tools, since it is done at the factory.*

15.3 Wakeup Triggers

There are four wakeup triggers:

- **UART Rx pulse** (STSLU)
- **External SLEEP input** (STSLX)
- **Voltage level** (STSLVL)
- **Voltage change** (STSLVG)

After any wakeup trigger timing requirements are satisfied, the OBDLink will wake up and perform an ATWS reset. The wakeup takes several milliseconds, therefore, the host must wait for the command prompt before issuing any commands.

The STSLLT command can be used to determine which trigger caused the device to wake up.

By default, UART Rx pulse and external SLEEP input wakeup triggers are on, and voltage triggers are off.

15.3.1 UART Rx Pulse Wakeup

OBDLink can be configured to wake up on an active pulse detected on the UART Rx input. The host can generate the pulse by holding the Rx line in a logic low state, transmitting an RS232 “break” signal, or sending a character on UART whose bit pattern produces a pulse of the required duration.

The wakeup pulse has **minimum** and **maximum timing** requirements, which are set using the STSLUWP command, and are accurate to within approximately 5 μ s. By default, the **minimum wakeup pulse width** is set to 0, which translates to an absolute minimum pulse width requirement of 20 ns. It can be increased to improve noise rejection; however, increasing the minimum pulse width will limit the maximum baud rate that the host must use to transmit the wake-up character. Due to the implementation limitations, setting the minimum wakeup pulse width to any value below 15 μ s will cause it to be rounded down to 0 (20 ns).

The purpose of the **maximum wakeup pulse width** requirement is to avoid unintentional wakeups. Some PC hosts (especially ones using the RS232 connection) cause the UART Rx line to go low or generate a slow (200 ms or longer) pulse as the host is shutting down or entering standby. The default setting is 30 ms, which allows the device to wake up on a character transmitted over UART at baud rates as low as 300 baud. To disable the maximum pulse requirement and have OBDLink wake up on the high to low UART Rx transition (instead of a pulse), set the maximum pulse timing setting to 0.

15.3.2 External SLEEP Input Wakeup

OBDLink can be configured to wake up when it senses logic high on the external SLEEP control input.

The STXWT commands sets the minimum time the SLEEP input must remain high in order to bring the device out of the sleep state. The setting of 0 will result in a minimum time requirement of 15 μ s.

Note: *Stand-alone ICs and microOBD 200 (STN1120) allow the polarity of the external SLEEP input to be inverted, via the STSLXP command.*

Section 15.2.3 lists possible applications for the external SLEEP input.

15.3.3 Voltage Level Wakeup

The OBDLink can also wake up based on the voltage on the ANALOG_IN input. This trigger can be configured in a variety of ways. The settings specify voltage threshold, whether the trigger is active above or below the threshold setting, and the minimum

amount of time the voltage must stay below or above the threshold for the device to wake up.

The voltage level wakeup trigger can be used to wake up the device when the engine starts up and the alternator causes the system voltage to increase. The default settings should work for most vehicles with lead-acid batteries.

Use the STSLCS command to verify that the trigger was properly configured. An exclamation point (!) in front of the voltage setting means that the trigger setting is invalid, and the trigger will never activate. Refer to Section 15.4, “Voltage Trigger Considerations” for more information.

Note: *In order for the voltage level wakeup trigger to operate properly on stand-alone ICs or microOBD 200 module (STN1120), the voltage measurement must be calibrated using the ATCV or STVCAL commands. The calibration is not necessary for the OBDLink scan tools, since it is done at the factory.*

15.3.4 Voltage Change Wakeup

The OBDLink can be configured to wake up when the *difference* between two consecutive voltage samples taken at the ANALOG_IN input exceeds a predefined threshold. The settings specify polarity of the change (rising, falling, or either), the change in volts or ADC steps, and the time between the samples.

The voltage change wakeup trigger can be used to wake up the device when the starter motor is cranking the engine (battery voltage dips) or when the engine starts up (voltage rises due to alternator running). This wakeup trigger can be more reliable than the voltage level wakeup trigger, since it does not rely on a specific voltage level which can vary between vehicles, but instead detects voltage change, which happens every time engine starts no matter what the battery level or the alternator voltage is.

Use the STSLCS command to verify that the trigger was properly configured. An exclamation point (!) in front of the voltage setting means that the trigger setting is invalid, and the trigger will never activate. Refer to Section 15.4, “Voltage Trigger Considerations” for more information.

Note: *If a non-default voltage scaling is used for the stand-alone ICs or the microOBD 200 module (STN1120), the voltage measurement must be calibrated using the ATCV or STVCAL commands, for the voltage change wakeup trigger to operate properly.*

15.4 Voltage Trigger Considerations

Analog voltage that OBDLink “sees” on the ANALOG_IN pin is represented internally by a 12-bit integer. The conversion is done by an internal Analog to Digital Converter (ADC for short). The voltage represented by a single bit is called an “ADC step”, and is measured in volts per bit (V/bit).

Since the maximum voltage that can be directly measured by the ANALOG_IN pin is very low (about 3V), the pin is normally connected to the voltage source to be measured via an external voltage divider. As its name implies, the voltage divider outputs a voltage that is a fraction of the actual input voltage. For example, a 1:10 voltage divider will output 1.2V for an input voltage of 12V.

Parameters to the voltage based triggers can be specified either in volts, or as raw ADC values.

When a parameter is specified in volts, OBDLink internally converts it to a corresponding ADC value. The size of the ADC step depends on the ratio of the voltage divider. By default, it is calibrated for a voltage divider with a ratio of 1:7.2. Keeping in mind that the maximum voltage on the ANALOG_IN pin is approximately equal to V_{DD} (typically, 3.3V), the maximum voltage that can be measured by the ADC using default calibration is about 24V:

$$3.3V \times 7.2 = 23.76V$$

To use voltage triggers with a voltage divider that has a different ratio, and to account for parts tolerances, the device must be calibrated using the ATCV or STVCAL commands.

When a parameter is specified as a raw ADC value, calibration must be done in the host software. To get the size of the ADC step, divide the actual measured voltage by the ADC value reported by the STVRX command. For example, if the actual measured voltage is 12V, and the STVRX command returns 0x7FF, the size of the ADC step is:

$$12V \div 0x7FF = 0.00586V/bit$$

To convert voltage to ADC steps, divide it by the ADC step size. For example, using the values above, 8V is equal to 0x555 steps:

$$8V \div 0.00586 = 0x555$$

Using ADC values instead of volts eliminates the need to convert ASCII to floating point and vice versa, greatly reducing the load on the host processor.

When setting up the voltage triggers, take special care to make sure that the parameters fall within a valid range of values. For example, the maximum voltage that can be represented by an ADC using default calibration is about 24V. If a parameter is set to

a higher value – say, 25V – it falls outside the valid range of values.

A calibration change may put a previously valid value outside of the valid range. For example, if the calibration reduces the maximum voltage from 24V to 14V, a trigger set at 15V will no longer be inside the valid range.

Additional examples of invalid settings are a voltage level trigger specified as ‘below 0V’, and voltage change trigger parameter set to a value less than one ADC step size.

Whenever a parameter value falls outside the valid range, the STSLCS command will display a ‘!’ in front of the voltage setting to indicate that it is invalid, and the trigger will never activate.

15.5 External Power Control Output

The **PWR_CTRL output** can be used to put external circuitry into a low power mode. This pin outputs a logic “high” while the device is awake, and a “low” when OBDLink enters sleep mode.

Stand-alone ICs allow the polarity of the PWR_CTRL to be changed via the STSLPCP command or bit 6 of the 0E programmable parameter (ELM327 LP mode only). The polarity is fixed for all other OBDLink devices.

15.6 Device Specific Details

This section describes device-specific PowerSave implementation details for the OBDLink-based devices.

15.6.1 OBDLink Hardware Rev 1.x

OBDLink devices with hardware revision 1.x do not have a means to power down the OBD drivers and other peripherals. As a result, they have the following limitations:

- In sleep mode, current consumption is about 37 mA (54 mA if the USB cable is plugged in and the virtual COM port is closed).
- External SLEEP control input is not enabled (ATIGN always returns “ON”, and STSLXS always returns “WAKE”).
- The “STATUS” LED is not controlled by the STN1100, and remains on during sleep.

15.6.2 OBDLink Hardware Rev 2.0 - 2.4

OBDLink revision 2.0 added a switch that allows the OBDLink to turn off all peripherals. The SLEEP input was connected to the positive terminal of the USB connector.

When enabled, the SLEEP input trigger will put the device to sleep when the chip detects that the host is

OBDLink Family

no longer present. This can happen when the PC shuts down or hibernates, or when the user unplugs the USB cable.

Likewise, the SLEEP input can be configured to wake up the device when the chip detects an active host.

The STN1100 turns off the “STATUS” LED during sleep.

Note 1: *In sleep mode about 15 mA of current will be drawn from the USB socket if the host is active. The extra current comes from the FT232 IC. To maximize power savings, USB must be unplugged, or the host must be shut down or put into standby mode.*

Note 2: *Wireless add-on modules (Bluetooth, WiFi) are unpowered in sleep mode. Therefore, it is not possible to wake up the device over a wireless link; use one of the voltage-based wakeup triggers instead.*

15.6.3 OBDLink Hardware Rev 2.5 and Above

The sleep functionality for OBDLink devices with hardware revision 2.5 operates identically to the devices with hardware revisions 2.0–2.4, with one exception. Revisions 2.0–2.4 detect unplugged USB cable, host shut down, or host hibernation. Hardware revision 2.5+ devices will also detect when the host is in standby or sleep mode, even if the host is still supplying 5V USB power.

Note: *Wireless add-on modules (Bluetooth, WiFi) are unpowered in sleep mode. Therefore, it is not possible to wake up the device over a wireless link; use one of the voltage-based wakeup triggers instead.*

15.6.4 OBDLink S

In OBDLink S devices, the SLEEP control input is implemented as “host present”. It is wired to sense whether a valid RS232 voltage is present on the RS232 Rx pin (pin 3 of the OBDLink S RS232 DB9 connector).

When enabled, the SLEEP input trigger can put the device to sleep when the chip detects that the host is no longer present. This can happen when the PC shuts down, enters standby, or when the user unplugs the serial cable.

Likewise, the SLEEP input can be configured to wake up the device when the chip detects an active host.

The STN1101 turns off the “STATUS” LED during sleep.

Note 1: *Some non-compliant USB to RS232 converters do not generate valid RS232 voltage levels. The SLEEP input sleep/wakeup triggers should not be*

used with such converters. Use the UART Rx pulse wakeup trigger (see Section 15.3.1) instead. A lower than normal baud rate may be necessary to wake up reliably, due to the wakeup requirements of the RS232 transceiver IC.

Note 2: *In sleep mode, the RS232 transceiver remains active if there is a valid voltage on the RS232 Rx pin. The transmitter can draw up to several mA of current, depending on the resistance of the load on the RS232 Tx line. For maximum power savings, disable the RS232 transceiver on the host side, shut down the host, or unplug the serial cable.*

15.6.5 OBDLink SX Rev 1.x

OBDLink SX revision 1.x has a 5V switch controlled by the “power enable” output of the FT232 IC. When the host enters sleep mode, the STN1130 is powered off, even though USB power is still available.

15.6.6 OBDLink SX Rev 2.x

OBDLink SX revision 2.x has a 5V switch controlled by the PWR_CTRL output of the STN1130. The external SLEEP input of STN1130 is connected to the “power enable” output of the FT232 IC.

15.6.7 OBDLink SX Rev 3.x

OBDLink SX revision 3.x added a 12V switch, controlled by the PWR_CTRL output of the STN1130.

15.6.8 OBDLink MX Bluetooth, OBDLink LX, and OBDLink MX+

These devices have the ability to shut off power to most of their peripherals in sleep. By default, they are configured to go to sleep on UART inactivity (after 10 minutes), and wake up on Bluetooth connection or voltage change.

15.6.9 OBDLink MX Wi-Fi

OBDLink MX Wi-Fi has the ability to shut off power to most of its peripherals in sleep. By default, it is configured to go to sleep on UART inactivity (after 2 hours), and wake up on Wi-Fi connection or voltage change.

15.6.10 microOBD 200

The microOBD 200 has all of the STN1120 PowerSave I/O exposed for user implementation.

PWR_CTRL output has its polarity fixed to be active low (sleep = low). It is connected to the LP_OUT module pin.

In order for the voltage-based sleep/wakeup triggers to operate properly, voltage measurement must be calibrated using the ATCV or STVCAL commands. Alternatively, use ADC counts to set up the voltage-based sleep/wakeup triggers.

15.6.11 STN1110, STN1170, STN2100, and STN2120

In order for the voltage-based sleep/wakeup triggers to operate properly, voltage measurement must be calibrated using the ATCV or STVCAL commands. Alternatively, use ADC counts to set up the voltage-based sleep/wakeup triggers.

15.7 Sleep/Wakeup Trigger Summary

| Sleep Triggers: Standalone ICs | |
|---------------------------------|---|
| Trigger | Default state |
| ATLP | User initiated. This trigger is available only in ELM327 Low Power mode |
| STSLEEP | User initiated, always available |
| UART inactivity | Off |
| External SLEEP input | Off |
| Voltage level | Off |
| Wakeup Triggers: Standalone ICs | |
| Trigger | Default state |
| UART Rx pulse | On |
| External SLEEP input | On |
| Voltage level | Off |
| Voltage change | Off |

| Sleep Triggers: OBDLink MX/LX/MX+ | |
|------------------------------------|---|
| Trigger | Default state |
| ATLP | User initiated. This trigger is available only in ELM327 Low Power mode |
| STSLEEP | User initiated, always available |
| UART inactivity | On, 600s |
| External SLEEP input | Off |
| Voltage level | Off |
| Wakeup Triggers: OBDLink MX/LX/MX+ | |
| Trigger | Default state |
| UART Rx pulse | On |
| External SLEEP input | On, allows for wakeup via button press |
| Voltage level | Off |
| Voltage change | On, 0.20V in 1000 ms |

Appendix A: Revision History

Revision D (October 6, 2020)

This revision adds information about new ST commands and functionality along with corrections of typos.

- Updated Section 3.0, “OBDLink Product Family”
 - Updated Section 3.1, “OBDLink Devices”
 - Updated Section 3.2, “OBDLink ICs”
- Updated Section 6.0, “Communicating with the OBDLink”
 - Updated ELM prompt version string information
- Updated Section 7.0, “AT Commands”
 - Updated Section 7.3, “Programmable Parameters”
- Updated and expanded Section 8.0, “ST Commands”
 - Added commands to Section 8.1, “ST Command Summary”
 - Updated Section 8.2, “General ST Commands”
 - Updated Section 8.4, “Device ID ST Commands”
 - Updated Section 8.8, “CAN Specific ST Commands”
 - Updated Section 8.9, “Monitoring ST Commands”
 - Updated Section 8.10, “Filtering ST Commands”
 - Added Section 8.14, “Periodic Messaging ST Commands”
- Updated Section 15.0, “PowerSave Functionality”
 - Updated Section 15.4, “Voltage Trigger Considerations”
 - Updated Section 15.6, “Device Specific Details”

Revision C (December 16, 2019)

This revision adds information about new ST commands and functionality and provides links to any referenced commands.

- Updated Section 3.0, “OBDLink Product Family”
- Updated Section 4.0, “Feature Highlights”
- Updated Section 5.0, “Typical Applications”
- Updated Section 7.0, “AT Commands”
 - Updated and expanded Section 7.3, “Programmable Parameters”
- Updated and expanded Section 8.0, “ST Commands”
 - Added and reorganized the command tables in Section 8.1, “ST Command Summary”
 - Updated Section 8.2, “General ST Commands”
 - Added Section 8.3, “UART Specific ST Commands”
 - Updated Section 8.4, “Device ID ST Commands”
 - Updated Section 8.6, “OBD Protocol ST Commands”
 - Updated Section 8.7, “ISO Specific ST Commands”
 - Updated Section 8.8, “CAN Specific ST Commands”
 - Updated Section 8.10, “Filtering ST Commands”
 - Added Section 8.12, “Bluetooth Specific ST Command”
- Updated Section 12.0, “ISO 15765 Message Reception”
 - Updated information on reception of multi-frame messages and transmission of flow control frames

Revision B (October 29, 2013)

This revision adds information about new devices and major new features and incorporates changes that were previously published as separate documents.

- Added Section 2.0, “Objective of This Manual”
- Added Section 3.0, “OBDLink Product Family”
- Updated Section 4.0, “Feature Highlights”

- Updated Section 5.0, “Typical Applications”
- Updated Section 6.0, “Communicating with the OBDLink”
- Updated Section 7.0, “AT Commands”
 - Moved the command tables into newly created Section 7.1, “AT Command Summary”. The tables now list the full command name, including the “ST” prefix. Changed available statuses to “supported”, “deprecated”, and “not yet supported”, with corresponding color codes
 - Added Section 7.2, “AT Command Descriptions”
 - Updated and expanded Section 7.3, “Programmable Parameters”. Added a more detailed overview and usage examples
- Updated and expanded Section 8.0, “ST Commands”
 - The commands are now referenced by their full name, including the “ST” prefix
 - Moved the command tables into the newly created Section 8.1, “ST Command Summary”. Added a table for deprecated commands
 - Updated and expanded Section 8.2, “General ST Commands”. Added a flowchart for the STBR Algorithm
 - Updated Section 8.4, “Device ID ST Commands”
 - Added Section 8.5, “Voltage ST Commands”
 - Added Section 8.6, “OBD Protocol ST Commands”
 - Updated Section 8.7, “ISO Specific ST Commands”
 - Updated Section 8.8, “CAN Specific ST Commands”
 - Updated Section 8.9, “Monitoring ST Commands”
 - Updated Section 8.10, “Filtering ST Commands”
 - Updated Section 8.11, “PowerSave ST Commands”
- Updated and expanded Section 9.0, “Error Messages”
- Updated and expanded Section 11.0, “OBD Message Filtering”
 - Updated the flowchart in Section 11.1, “Non-CAN Protocols” with new command names
 - Updated Section 11.2, “CAN Protocols” with references to the SAE J1939 protocol
- Renamed Section 12.0 from “CAN Message Reception” to “ISO 15765 Message Reception”
 - Updated the Message Reception flowchart to reflect the new command names
- Added Section 14.0, “SAE J1939”
- Updated and expanded Section 15.0, “PowerSave Functionality”
 - Updated the overview to explain the concept of a sleep/wakeup trigger
 - Updated Section 15.1.2, “ELM327 Low Power Mode”
 - Updated Section 15.2, “Sleep Triggers” (added mention of SLVL trigger)
 - Updated Section 15.2.2, “UART Inactivity”
 - Added Section 15.2.4, “Voltage Level Sleep”
 - Updated Section 15.3, “Wakeup Triggers” (added SLVL and SLVG triggers)
 - Added Section 15.3.3, “Voltage Level Wakeup”
 - Added Section 15.3.4, “Voltage Change Wakeup”
 - Added Section 15.4, “Voltage Trigger Considerations”
 - Updated Section 15.6, “Device Specific Details”
 - Updated Section 15.6.2 and renamed it from “OBDLink Hardware Rev 2.x” to “OBDLink Hardware Rev 2.0–2.4”
 - Added Section 15.6.3, “OBDLink Hardware Rev 2.5 and Above”
 - Added Section 15.6.5, “OBDLink SX Rev 1.x”
 - Added Section 15.6.6, “OBDLink SX Rev 2.x”
 - Added Section 15.6.7, “OBDLink SX Rev 3.x”
 - Added Section 15.6.8, “OBDLink MX Bluetooth”
 - Added Section 15.6.10, “microOBD 200”
 - Added Section 15.6.11, “STN1110, STN1170, STN2100, and STN2120”
 - Added Section 15.7, “Sleep/Wakeup Trigger Summary”

Revision A (October 28, 2009)

Initial release of this document.

Appendix B: Contact Information

OBD Solutions, LLC
11048 N 23rd Ave Ste 101
Phoenix, AZ 85029
United States

Phone: +1 623.434.5506
Email: sales@obdsol.com
Web: www.obdsol.com